



***Water Station Manual***  
***February 14, 2016***

*as of 12/21/15*



## Water/Medical Station Locations 2016

Mile	Water Station	Medical Station
1	Sunset N of Marion (Mile 2 WS in 2010)	
2	Broadway, mid-block between Cesar Chavez and Ord St	
3	1st Street between Los Angeles St and San Pedro	
4	Grand Avenue, between 1st St and Temple	
5	Glendale Blvd, between Bellevue and Kent St (near stairway)	
6		Sunset and Rosemount Ave
7	Sunset Blvd, between Vendome and Westerly Terrace	
8	Hollywood Blvd, between Virgil and Lyman	Sunset/Hollywood/Prospect – small park area
9	Hollywood Blvd between Hobart Blvd and Serrano Ave	
10	Hollywood Blvd, west of Bronson Ave	Hollywood and Gower
11	Hollywood Blvd, just east of Highland Ave	
12	Sunset Blvd, between Vista and Gardner	Sunset and Gardner
13	Sunset Blvd, between Hayworth and Laurel	
14	Sunset Blvd, west of Sunset Plaza Dr	San Vicente and Cynthia
15	Santa Monica Blvd, between Ramage and Wiley	
16	Burton Way at Foothill	Burton and Rexford in park
17	Little Santa Monica, just west of Charleville	
18	Santa Monica Blvd, between Thayer and Fairburn	SM Blvd and Westholme
19	Santa Monica Blvd, west of Veteran (Clif Shots east of Veteran)	
20	Sepulveda, just south of Wilshire	Sepulveda and Ohio – in parking lot
21		
22	San Vicente Blvd, just west of S Bundy Dr (in front of school)	SV and Gretna Green in median
23	San Vicente Blvd, between 25th St and 24th St	
24	San Vicente Blvd – just west of 14 <sup>th</sup> St.	SV and 11th St
25	Ocean Ave, just past Marguerita Ave	

**We will be having late station volunteers at Mile 15, 17, 19, 21, 23, 25.**

**Water Station locations are subject to change.**

## 2016 Water Station Captain & Co-Captain Contacts

MILE	CAPTAIN	CELL PHONE	CO-CAPTAIN	CELL PHONE
2	Raymond Monk	213 500 9083	Alvin Hollier	832 215 6756
3	Ronnie Brock	213 434 9531	Clovis Clark	213 590 4821
4	Lily Woo	323 428 4282	Raymond Woo	323 428 4280
5	Belen Rivera	323 244 8484	Eric Rivera	
6	Adan Pineda	323 821 6365	Severo Garcia	626 862 9652
7	Dorothy Chu	323 816 1096	Gilbert Gaona	323-855-1705
8	Marc Bonifacio	714 697 3047	Kavi Raj Singh	714 210 9297
9	Jaspreet Singh	714 553 3135	Navjot Singh	323 456 6155
			Gurmeet Singh	310 869 0725
10	Sarbjit Singh	818 402 0878	Pargat Singh	661 713 7453
11	Jacqueline Williams	323 299 3406	Diane Hunter	818 442 3190
12	Maninderjit Singh	310 698 2426	Amarjeet Singh	310 291 4835
13	Edgar Ninofranco	323 422 7554	Geoffrey Arroyo	
14	Prem Singh	818 314 2872	Paramjit Singh	310 570 0295
15	Alisa Anderson	323 246 9444	Cornelius Hadnot	310 704 4269
16	Kathi Rothner	310 625 5644	Helene Harris	310 489 8449
17/late	Amber Lea Walser	305 304 4196		
18	Surinderjit Singh	818 454 1730	Mandeep Sagoo	818 687 1775
19	Jasneet "Jay" Sethi	562 225 6812	Damanjit Singh	323 387 8811
20	Charles Green	424 645 9865	Nikki Baker	310 261 4732
21/late	Anna Ramirez	310 218 2538	Adrian Castaneda	424 901 9717
22	Emily Berkin	310 382 0144		
23/late	Shigeyuki Hatta	310 844 8970	Barney M. Ono	
24	Erica Moya	323 251 5333	Maria Zapien	323 497 3570
25	Christina Cortes	323-385-7558	Lupe Ochoa	323 547 5984
25 late	Robyn Myers	818 326 0423	Denise Nossett	

Carmen Santiago cell: 610-914-8464  
Elite Athlete Fluids Coordinator, Scott Winnier 808-660-6048

## 2016 LA Marathon Water Station Layout

### Mile 1

Water Station Captain: Portos Only  
Arrival Time:

Fill:  
By:

Qty.	Supply	Qty.	Supply	Qty.	Supply
	AED(defibrillator)		Dolly	20	Toilets
	Box Cutters		Garden Hose & Attachment		Tables - Total
	Box of T-Shirts		First Aid Kit		Tables - Elite
	Boxes Hand Wipes		Gatorade Containers		Tables - Gatorade
	Boxes of Gloves		Gatorade Mixing Paddles		Tables - Water
	Brooms/ Rakes		Plastic Pitchers		Trash Bags & Ties
	Cases Gatorade Mix (4 gal/case) - 10K servings		Shovels		Trash Boxes
	Pallets of 1 Gal Water(1512 Gal = 30k servings water [1200 gal], 10k servings Gatorade [300 gal])		Stacking Sheets		Vaseline
	Cases of Arrowhead Water Cups		Tables/ Skirts		LargeTrash Cans (for hydrant water)
	Cases Gatorade Cups	42	Toilet Paper		

**Location:** Sunset Blvd, just north of Marion Avenue

**Mile Marker:** On Sunset Blvd, L side, across from and just past #1218 and 4' N of "Lumber Bldg Materials"



- \* Fire Hydrant  
w/ Eddie Valve
- T Toilets
- Tables

# 2016 LA Marathon Water Station Layout

## Mile 2

Water Station Captain: Raymond Monk  
Arrival Time: 5:30 a.m.

Fill: 12,000 Cups  
By: 7:00 a.m.

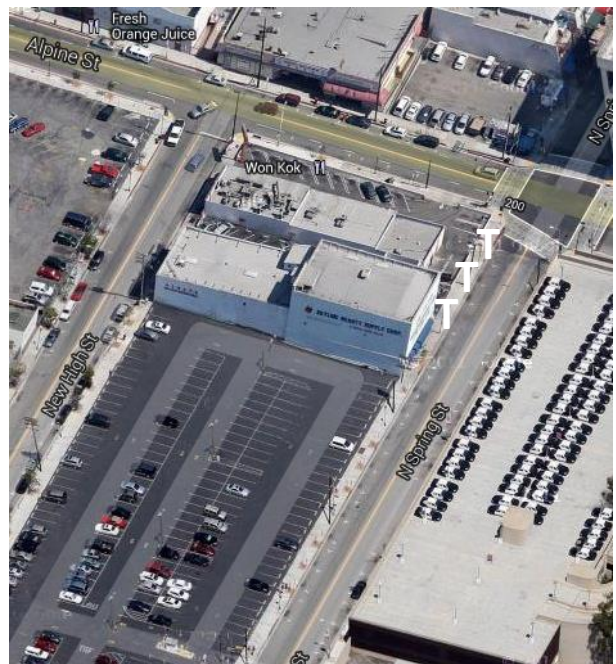
Qty.	Supply	Qty.	Supply	Qty.	Supply
1	AED(defibrillator)	1	Dolly	14	Toilets
2	Box Cutters	1	Garden Hose & Attachment	34	Tables - Total
1	Box of T-Shirts	1	First Aid Kit	N/A	Tables - Elite
2	Boxes Hand Wipes	10	Gatorade Containers	10	Tables - Gatorade
4	Boxes of Gloves	10	Gatorade Mixing Paddles	24	Tables - Water
4	Brooms/ Rakes	10	Plastic Pitchers	100	Trash Bags & Ties
13	Cases Gatorade Mix (4 gal/case) - 10K servings	2	Shovels	10	Trash Boxes & 1 Case of Liners
7	Pallets of 1 Gal Water(1512 Gal = 30k servings water [1200 gal], 10k servings Gatorade [300 gal])	226	Stacking Sheets	4	Vaseline
15	Cases of Arrowhead Water Cups	10	Tables/ Skirts	2	LargeTrash Cans (for hydrant water)
5	Cases Gatorade Cups	42	Toilet Paper	1	Roll of Clear Liners recyclable

**Location:** Broadway, mid block btw Cesar Chavez and Ord St (toilets are on Spring, south of Alpine)

**Mile Marker:** On N Broadway, L side, 3 yds before parking meter #249 (3rd meter N of Sunset)



- \* Fire Hydrant
- T Toilets
- Tables





# 2016 LA Marathon Water Station Layout

## Mile 3

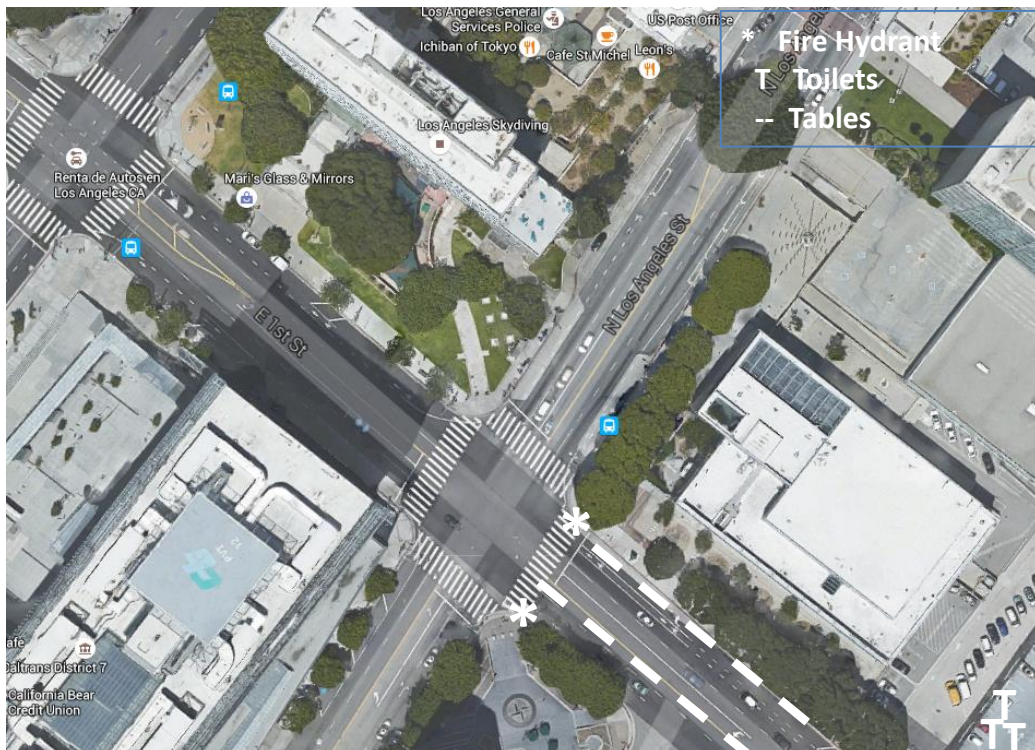
Water Station Captain: Ronnie Brock  
Arrival Time: 5:30 a.m.

Fill: 12,000 Cups  
By: 7:00 a.m.

Qty.	Supply	Qty.	Supply	Qty.	Supply
1	AED(defibrillator)	1	Dolly	14	Toilets
2	Box Cutters	1	Garden Hose & Attachment	34	Tables - Total
1	Box of T-Shirts	1	First Aid Kit	N/A	Tables - Elite
2	Boxes Hand Wipes	10	Gatorade Containers	10	Tables - Gatorade
4	Boxes of Gloves	10	Gatorade Mixing Paddles	24	Tables - Water
4	Brooms/ Rakes	16	Plastic Pitchers	100	Trash Bags & Ties
13	Cases Gatorade Mix (4 gal/case) - 10K servings	2	Shovels	10	Trash Boxes & 1 Case of Liners
7	Pallets of 1 Gal Water(1512 Gal = 30k servings water [1200 gal], 10k servings Gatorade [300 gal])	226	Stacking Sheets	4	Vaseline
15	Cases of Arrowhead Water Cups	10	Tables/ Skirts	2	LargeTrash Cans (for hydrant water)
5	Cases Gatorade Cups	42	Toilet Paper	1	Roll Clear Liners recyclables

**Location:** 1<sup>st</sup> Street, between Los Angeles St and San Pedro (toilets on 1<sup>st</sup> st, just past San Pedro)

**Mile Marker:** On Main St, L side, Between Temple & 1st, next to 1st manhole at pedestrian overpass S side of City Hall



# 2016 LA Marathon Water Station Layout

## Mile 4

Water Station Captain: Lily Woo  
Arrival Time: 5:30 a.m.

Fill: 12,000 Cups  
By: 7:00 a.m.

Qty.	Supply	Qty.	Supply	Qty.	Supply
1	AED(defibrillator)	1	Dolly	14	Toilets
2	Box Cutters	1	Garden Hose & Attachment	34	Tables - Total
1	Box of T-Shirts	1	First Aid Kit	0	Tables - Elite
2	Boxes Hand Wipes	10	Gatorade Containers	10	Tables - Gatorade
4	Boxes of Gloves	10	Gatorade Mixing Paddles	24	Tables - Water
4	Brooms/ Rakes	10	Plastic Pitchers	100	Trash Bags & Ties
16	Cases Gatorade Mix (4 gal/case) - 10K servings	2	Shovels	10	Trash Boxes & Case of Liners
7	Pallets of 1 Gal Water(1512 Gal = 30k servings water [1200 gal], 10k servings Gatorade [300 gal])	226	Stacking Sheets	4	Vaseline
15	Cases of Water Cups	10	Tables Skirts	2	LargeTrash Cans (for hydrant water)
6	Cases Gatorade Cups	42	Toilet Paper	1	Roll of Clear Liners for Recyclables

**Location:** Grand Avenue, between 1<sup>st</sup> and Temple in front of Dorothy Chandler Paviliion, Toilets on Grand, just south of Temple, on east side

**Mile Marker:** On 1st St, L side, 19 yds N of Spring St





# 2016 LA Marathon Water Station Layout

## Mile 5

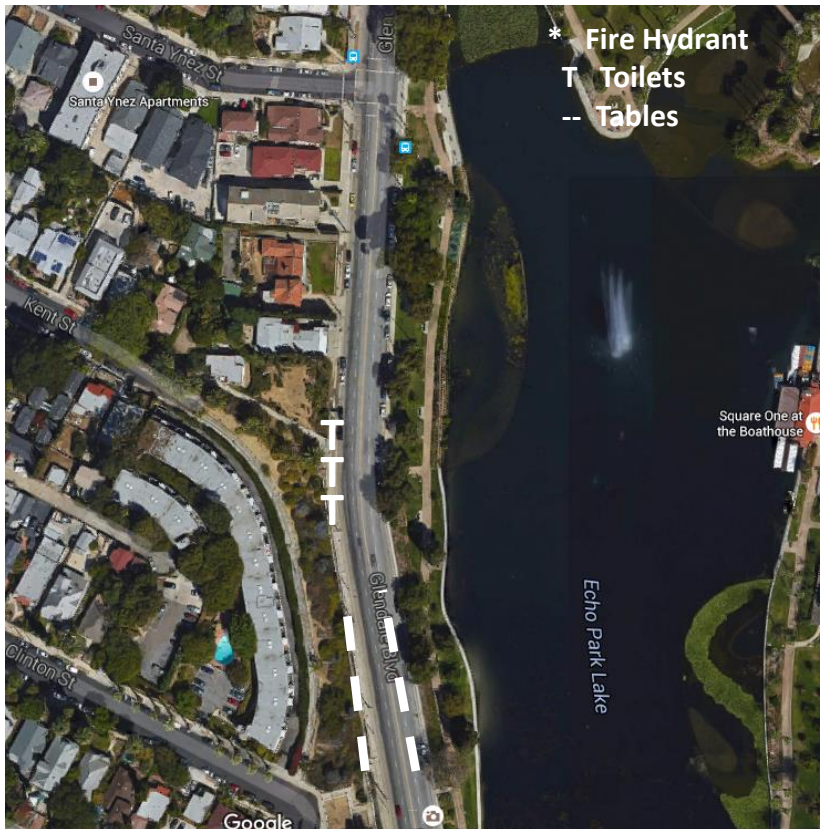
Water Station Captain: Belen Rivera  
Arrival Time: 5:30 a.m.

Fill: 12,000 Cups  
By: 7:00 a.m.

Qty.	Supply	Qty.	Supply	Qty.	Supply
1	AED(defibrillator)	1	Dolly	14	Toilets
2	Box Cutters	1	Garden Hose & Attachment	32	Tables - Total
1	Box of T-Shirts	1	First Aid Kit	N/A	Tables - Elite
2	Boxes Hand Wipes	10	Gatorade Containers	10	Tables - Gatorade
4	Boxes of Gloves	10	Gatorade Mixing Paddles	22	Tables - Water
4	Brooms/ Rakes	10	Plastic Pitchers	100	Trash Bags & Ties
16	Cases Gatorade Mix (4 gal/case) - 10K servings	2	Shovels	10	Trash Boxes & 1 Case of Liners
7	Pallets of 1 Gal Water(1512 Gal = 30k servings water [1200 gal], 10k servings Gatorade [300 gal])	226	Stacking Sheets	4	Vaseline
15	Cases of Water Cups	10	Tables/ Skirts	2	LargeTrash Cans (for hydrant water)
6	Cases Gatorade Cups	42	Toilet Paper	1	Roll Clear Liners for Recyclables

**Location:** Glendale Blvd, north of Bellevue, Toilets on Glendale, just south of Kent near stairway with painted mural

**Mile Marker #6:** On Glendale Blvd, R side, across from #831/837 and 36 yds before Santa Ynez St.





# 2016 LA Marathon Water Station Layout

## Mile 7

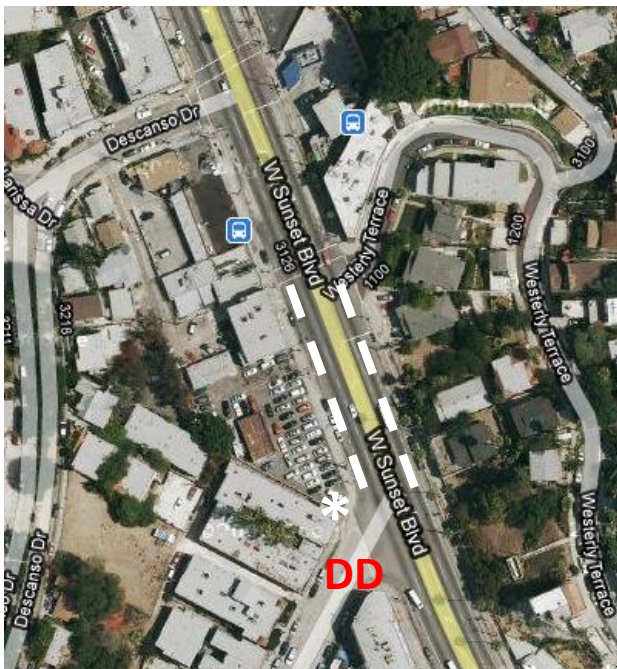
Water Station Captain: Dorothy Chu  
Arrival Time: 5:30 a.m.

Fill: 12,000 Cups  
By: 7:00 a.m.

Qty.	Supply	Qty.	Supply	Qty.	Supply
1	AED(defibrillator)	1	Dolly	12	Toilets
2	Box Cutters	1	Garden Hose & Attachment	30	Tables - Total
1	Box of T-Shirts	1	First Aid Kit	N/A	Tables - Elite
2	Boxes Hand Wipes	10	Gatorade Containers	10	Tables - Gatorade
4	Boxes of Gloves	10	Gatorade Mixing Paddles	20	Tables - Water
4	Brooms/ Rakes	10	Plastic Pitchers	100	Trash Bags & Ties
18	Cases Gatorade Mix (4 gal/case) - 10K servings	2	Shovels	10	Trash Boxes & Case of Liners
10	Pallets of 1 Gal Water(1512 Gal = 30k servings water [1200 gal], 10k servings Gatorade [300 gal])	226	Stacking Sheets	4	Vaseline
22.5	Cases of Arrowhead Water Cups	N/A	Tables/ Skirts	2	LargeTrash Cans (for hydrant water)
7	Cases Gatorade Cups	42	Toilet Paper	1	Roll Liners for Recyclables

**Location:** Sunset Blvd, between Vendome and Westerly Terrace

**Mile Marker:** On Sunset Blvd, R side, across from #2836. (just south of Silver Lake Blvd)



- \* Fire Hydrant
- T Toilets
- Tables



# 2016 LA Marathon Water Station Layout

## Mile 8

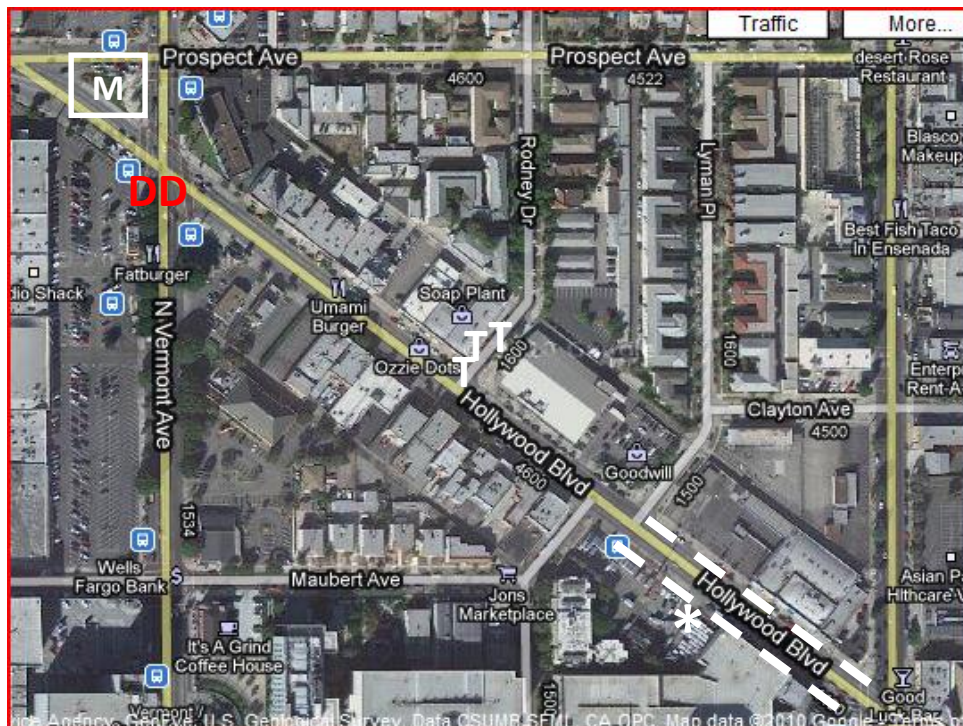
Water Station Captain: Marc Bonifacio  
Arrival Time: 5:30 a.m.

Fill: 12,000 Cups  
By: 7:00 a.m.

Qty.	Supply	Qty.	Supply	Qty.	Supply
1	AED(defibrillator)	1	Dolly	12	Toilets
2	Box Cutters	1	Garden Hose & Attachment	38	Tables - Total
1	Box of T-Shirts	1	First Aid Kit	8	Tables - Elite
2	Boxes Hand Wipes	10	Gatorade Containers	10	Tables - Gatorade
4	Boxes of Gloves	10	Gatorade Mixing Paddles	20	Tables - Water
4	Brooms/ Rakes	10	Plastic Pitchers	100	Trash Bags & Ties
21	Cases Gatorade Mix (4 gal/case) - 10K servings	2	Shovels	10	Trash Boxes & Case of Liners
10	Pallets of 1 Gal Water(1512 Gal = 30k servings water [1200 gal], 10k servings Gatorade [300 gal])	226	Stacking Sheets	4	Vaseline
22.5	Cases of Arrowhead Water Cups	10	Tables/ Skirts	2	LargeTrash Cans (for hydrant water)
8	Cases Gatorade Cups	42	Toilet Paper	1	Roll Liners for Recyclables

**Location:** Hollywood Blvd, between Virgil and Lyman (MEDICAL-Hollywood/Vermont/Prospect on sidewalk)

**Mile Marker:** On Sunset Blvd, R side, across from #4220. (across from El Cid)



- \* Fire Hydrant
- T Toilets
- Tables
- M Medical
- DD Runner Shuttle



# 2016 LA Marathon Water Station Layout

## Mile 9

Water Station Captain: Jaspreet Singh  
Arrival Time: 5:45 a.m.

Fill: 12,000 Cups  
By: 7:15 a.m.

Qty.	Supply	Qty.	Supply	Qty.	Supply
1	AED(defibrillator)	1	Dolly	10	Toilets
2	Box Cutters	1	Garden Hose & Attachment	30	Tables - Total
1	Box of T-Shirts	1	First Aid Kit	N/A	Tables - Elite
2	Boxes Hand Wipes	10	Gatorade Containers	10	Tables - Gatorade
4	Boxes of Gloves	10	Gatorade Mixing Paddles	20	Tables - Water
4	Brooms/ Rakes	10	Plastic Pitchers	100	Trash Bags & Ties
21	Cases Gatorade Mix (4 gal/case) - 10K servings	2	Shovels	10	Trash Boxes & case of Liners
10	Pallets of 1 Gal Water(1512 Gal = 30k servings water [1200 gal], 10k servings Gatorade [300 gal])	226	Stacking Sheets	4	Vaseline
22.5	Cases of Arrowhead Water Cups	10	Tables/ Skirts	2	LargeTrash Cans (for hydrant water)
8	Cases Gatorade Cups	42	Toilet Paper	1	Roll Liners for Recyclables

**Location:** Hollywood Blvd. between Hobart Blvd and Serrano Ave.

**Mile Marker:** On Hollywood Blvd, R side, at light pole NW corner Edgemont St.



\* Fire Hydrant  
T Toilets  
-- Tables  
DD Runner Shuttle



# 2016 LA Marathon Water Station Layout

## Mile 10

Water Station Captain: Sarbijt Singh  
Arrival Time: 5:45 a.m.

Fill: 12,000 Cups  
By: 7:15 a.m.

Qty.	Supply	Qty.	Supply	Qty.	Supply
1	AED(defibrillator)	1	Dolly	10	Toilets
2	Box Cutters	1	Garden Hose & Attachment	30	Tables - Total
1	Box of T-Shirts	1	First Aid Kit	N/A	Tables - Elite
2	Boxes Hand Wipes	10	Gatorade Containers	10	Tables - Gatorade
4	Boxes of Gloves	10	Gatorade Mixing Paddles	20	Tables - Water
4	Brooms/ Rakes	10	Plastic Pitchers	100	Trash Bags & Ties
21	Cases Gatorade Mix (4 gal/case) - 10K servings	2	Shovels	10	Trash Boxes & Case of Liners
10	Pallets of 1 Gal Water(1512 Gal = 30k servings water [1200 gal], 10k servings Gatorade [300 gal])	226	Stacking Sheets	4	Vaseline
22.5	Cases of Arrowhead Water Cups	10	Tables/ Skirts	2	LargeTrash Cans (for hydrant water)
8	Cases Gatorade Cups	42	Toilet Paper	1	Roll Liners for Recyclables

**Location:** Hollywood Blvd, west of Bronson Ave (MEDICAL – Hollywood and Gower)

**Mile Marker:** On Hollywood Blvd, R side, at light pole NW corner Wilton Pl.



\* Fire Hydrant  
T Toilets  
-- Tables  
M Medical  
DD Runner Shuttle

# 2016 LA Marathon Water Station Layout

## Mile 11

Water Station Captain: Jacqueline Williams  
Arrival Time: 5:45 a.m.

Fill: 12,000 Cups  
By: 7:15 a.m.

Qty.	Supply	Qty.	Supply	Qty.	Supply
1	AED(defibrillator)	1	Dolly	10	Toilets
2	Box Cutters	1	Garden Hose & Attachment	30	Tables - Total
1	Box of T-Shirts	1	First Aid Kit	N/A	Tables - Elite
2	Boxes Hand Wipes	10	Gatorade Containers	10	Tables - Gatorade
4	Boxes of Gloves	10	Gatorade Mixing Paddles	20	Tables - Water
4	Brooms/ Rakes	10	Plastic Pitchers	100	Trash Bags & Ties
21	Cases Gatorade Mix (4 gal/case) - 10K servings	2	Shovels	10	Trash Boxes & Case of Liners
10	Pallets of 1 Gal Water(1512 Gal = 30k servings water [1200 gal], 10k servings Gatorade [300 gal])	226	Stacking Sheets	4	Vaseline
22.5	Cases of Arrowhead Water Cups	10	Tables/ Skirts	2	LargeTrash Cans (for hydrant water)
8	Cases Gatorade Cups	42	Toilet Paper	1	Roll Liners for Recyclables

**Location:** Hollywood Blvd, just east of Highland Ave (Toilets are on Orange, S of Hawthorn)

**Mile Marker:** On Hollywood Blvd, R side, at light pole NW corner Wilcox.

\* Fire Hydrant  
T Toilets  
-- Tables  
DD Runner Shuttle





# 2016 LA Marathon Water Station Layout

## Mile 12

Water Station Captain: Amarjeet Singh

Fill: 12,000 Cups

Arrival Time: 5:45 a.m.

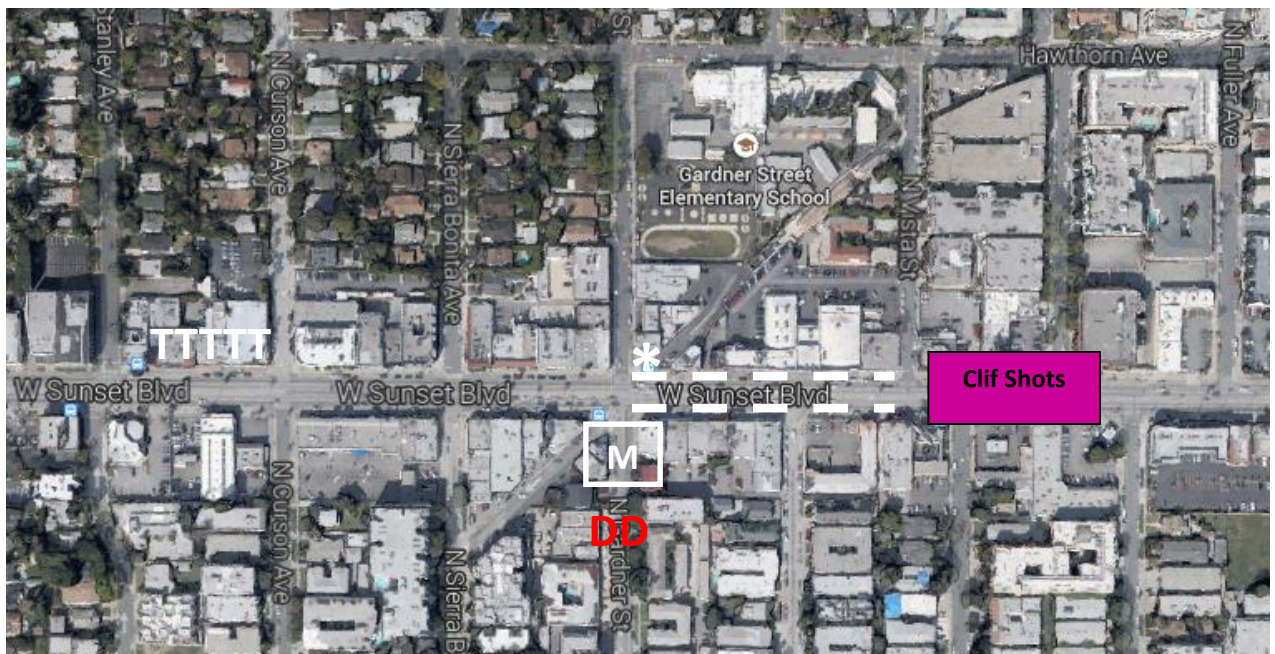
By: 7:15 a.m.

Qty.	Supply	Qty.	Supply	Qty.	Supply
1	AED(defibrillator)	1	Dolly	10	Toilets
2	Box Cutters	1	Garden Hose & Attachment	46	Tables - Total
2	Box of T-Shirts (1-Vol)	1	First Aid Kit	8	Tables - Elite
2	Boxes Hand Wipes	10	Gatorade Containers	10	Tables - Gatorade
4	Boxes of Gloves	10	Gatorade Mixing Paddles	20	Tables - Water
4	Brooms/ Rakes	10	Plastic Pitchers	100	Trash Bags & Ties
21	Cases Gatorade Mix (4 gal/case) - 10K servings	2	Shovels	10	Trash Boxes & Case of Liners
10	Pallets of 1 Gal Water(1512 Gal = 30k servings water [1200 gal], 10k servings Gatorade [300 gal])	226	Stacking Sheets	4	Vaseline
22.5	Cases of Arrowhead Water Cups	10	Tables/ Skirts	2	LargeTrash Cans (for hydrant water)
8	Cases Gatorade Cups	42	Toilet Paper	1	Roll Liners for Recyclables
2	Pallets Clif Shots	4	40 gallon water barrels	8	Tables – Clif Shot

**Location:** Sunset Blvd, between Vista and Gardner (MEDICAL – Sunset and Gardner)

**Mile Marker:** On Sunset Blvd, R side, at 1st manhole W of La Brea.

**\*\*\*Clif Shots will be distributed from this location. They must be given out BEFORE the water.**  
**4 tables of Clif Shots on each side of the street.**





# 2016 LA Marathon Water Station Layout

## Mile 13

Water Station Captain: Edgar Ninofranco  
Arrival Time: 6:00 a.m.

Fill: 12,000 Cups  
By: 7:30 a.m.

Qty.	Supply	Qty.	Supply	Qty.	Supply
1	AED(defibrillator)	1	Dolly	10	Toilets
2	Box Cutters	1	Garden Hose & Attachment	30	Tables - Total
1	Box of T-Shirts	1	First Aid Kit	N/A	Tables - Elite
2	Boxes Hand Wipes	10	Gatorade Containers	10	Tables - Gatorade
4	Boxes of Gloves	10	Gatorade Mixing Paddles	20	Tables - Water
4	Brooms/ Rakes	10	Plastic Pitchers	100	Trash Bags & Ties
21	Cases Gatorade Mix (4 gal/case) - 10K servings	2	Shovels	10	Trash Boxes & Case of Liners
10	Pallets of 1 Gal Water(1512 Gal = 30k servings water [1200 gal], 10k servings Gatorade [300 gal])	226	Stacking Sheets	4	Vaseline
22.5	Cases of Arrowhead Water Cups	10	Tables/ Skirts	2	LargeTrash Cans (for hydrant water)
8	Cases Gatorade Cups	42	Toilet Paper	1	Roll Liners for Recyclables

**Location:** Sunset Blvd between Hayworth and Laurel

**Mile Marker:** On Sunset Blvd, R side, at 1st wood power pole (#23605M) W of Fairfax.



\* Fire Hydrant  
T Toilets  
-- Tables  
DD Runner Shuttle

# 2016 LA Marathon Water Station Layout

## Mile 14

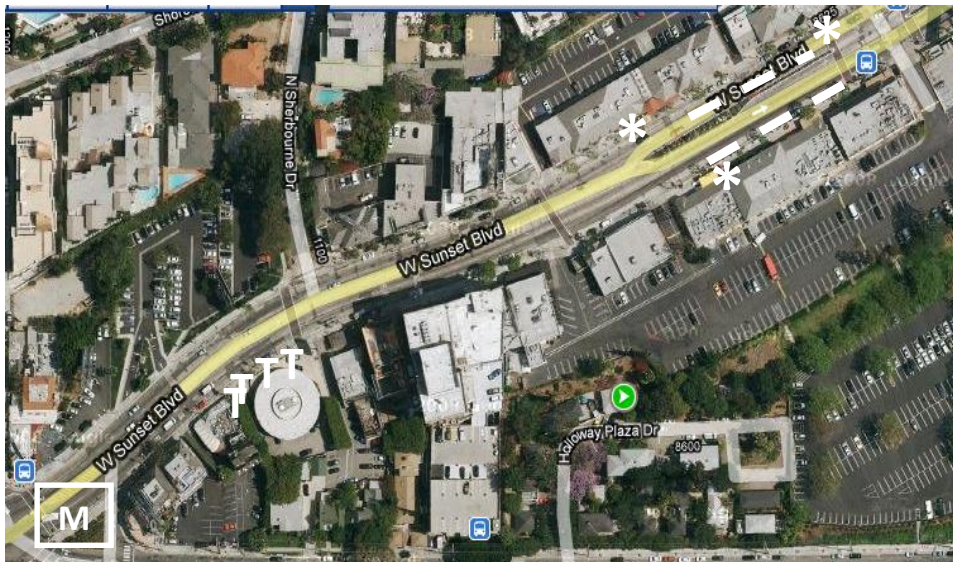
Water Station Captain: Prem Singh  
Arrival Time: 6:00 a.m.

Fill: 12,000 Cups  
By: 7:30 a.m.

Qty.	Supply	Qty.	Supply	Qty.	Supply
1	AED(defibrillator)	1	Dolly	10	Toilets
2	Box Cutters	1	Garden Hose & Attachment	30	Tables - Total
1	Box of T-Shirts	1	First Aid Kit	N/A	Tables - Elite
2	Boxes Hand Wipes	10	Gatorade Containers	10	Tables - Gatorade
4	Boxes of Gloves	10	Gatorade Mixing Paddles	20	Tables - Water
4	Brooms/ Rakes	10	Plastic Pitchers	100	Trash Bags & Ties
21	Cases Gatorade Mix (4 gal/case) - 10K servings	2	Shovels	10	Trash Boxes & case of Liners
10	Pallets of 1 Gal Water(1512 Gal = 30k servings water [1200 gal], 10k servings Gatorade [300 gal])	226	Stacking Sheets	4	Vaseline
22.5	Cases of Arrowhead Water Cups	10	Tables/ Skirts	2	LargeTrash Cans (for hydrant water)
8	Cases Gatorade Cups	42	Toilet Paper	1	Roll Liners for Recyclables

**Location:** Sunset Blvd, west of Sunset Plaza Dr (MEDICAL – Sunset and Holloway)

**Mile Marker:** On Sunset Blvd, L side, just W of Alta Loma Rd, even with front doors for #8560.



\* Fire Hydrant  
T Toilets  
-- Tables  
M Medical  
DD Runner Shuttle

**DD Down Dropped Runner Van located on Larrabee, south of Sunset**



# 2016 LA Marathon Water Station Layout

## Mile 15

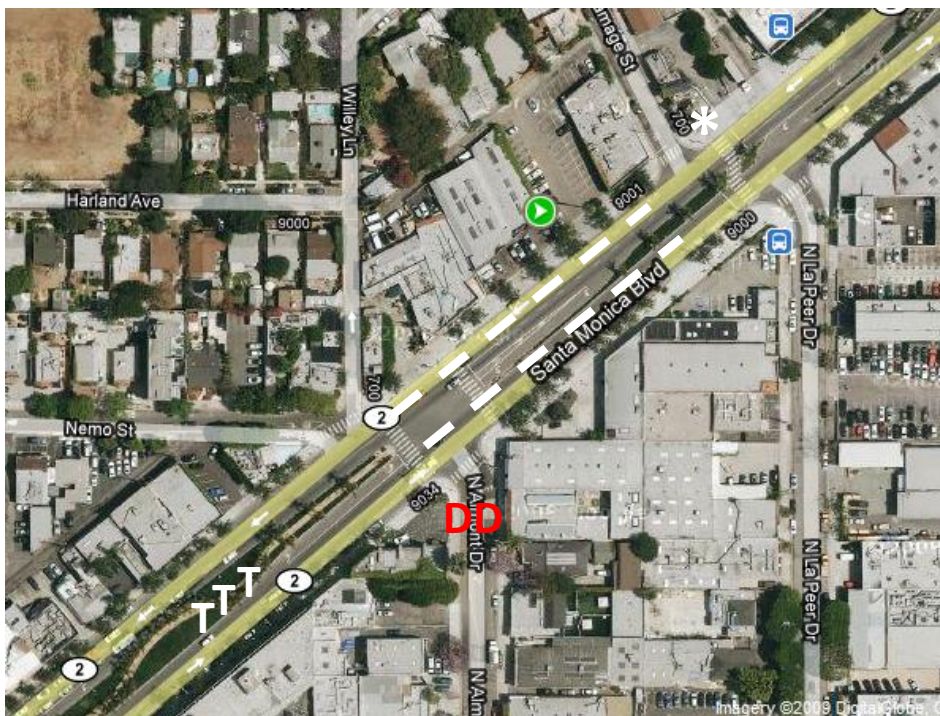
Water Station Captain: Alisa Anderson  
Arrival Time: 6:00 a.m.

Fill: 12,000 Cups  
By: 7:30 a.m.

Qty.	Supply	Qty.	Supply	Qty.	Supply
1	AED(defibrillator)	1	Dolly	10	Toilets
2	Box Cutters	1	Garden Hose & Attachment	30	Tables - Total
1	Box of T-Shirts	1	First Aid Kit	N/A	Tables - Elite
2	Boxes Hand Wipes	10	Gatorade Containers	10	Tables - Gatorade
4	Boxes of Gloves	10	Gatorade Mixing Paddles	20	Tables - Water
4	Brooms/ Rakes	10	Plastic Pitchers	100	Trash Bags & Ties
21	Cases Gatorade Mix (4 gal/case) - 10K servings	2	Shovels	10	Trash Boxes & Case of Liners
10	Pallets of 1 Gal Water(1512 Gal = 30k servings water [1200 gal], 10k servings Gatorade [300 gal])	226	Stacking Sheets	4	Vaseline
22.5	Cases of Arrowhead Water Cups	10	Tables Skirts	2	LargeTrash Cans (for hydrant water)
8	Cases Gatorade Cups	42	Toilet Paper	1	Roll Liners for Recyclables

**Location:** Santa Monica Blvd, between Ramage and Wiley

**Mile Marker:** On Santa Monica Blvd, R side, at 1st meter (#8923/8921) W of Robertson Blvd.



- \* Fire Hydrant
- T Toilets
- Tables
- DD Runner Shuttle

**Misc:** Please make sure to give your remaining water, cups, Gatorade, 3 tables, & 1 rake to the Late Water Station Captain.



# 2016 LA Marathon Water Station Layout

## Mile 16

Water Station Captain: Kathi Rothner  
Arrival Time: 6:00 a.m.

Fill: 12,000 Cups  
By: 7:30 a.m.

Qty.	Supply	Qty.	Supply	Qty.	Supply
1	AED(defibrillator)	1	Dolly	10	Toilets
2	Box Cutters	1	Garden Hose & Attachment	38	Tables - Total
1	Box of T-Shirts	1	First Aid Kit	8	Tables - Elite
2	Boxes Hand Wipes	10	Gatorade Containers	10	Tables - Gatorade
4	Boxes of Gloves	10	Gatorade Mixing Paddles	20	Tables - Water
4	Brooms/ Rakes	10	Plastic Pitchers	100	Trash Bags & Ties
21	Cases Gatorade Mix (4 gal/case) - 10K servings	2	Shovels	10	Trash Boxes & Case of Liners
10	Pallets of 1 Gal Water(1512 Gal = 30k servings water [1200 gal], 10k servings Gatorade [300 gal])	226	Stacking Sheets	4	Vaseline
22.5	Cases of Arrowhead Water Cups	10	Tables Skirts	2	LargeTrash Cans (for hydrant water)
8	Cases Gatorade Cups	42	Toilet Paper	1	Roll Liners for Recyclables

**Location:** Burton Way starting at Foothill Rd and continuing east  
(MEDICAL – Rexford Park, Rexford and Burton)

**Mile Marker:** On Burton Way E-bound, at alleyway just past Oakhurst Dr, next to LA DWP Water marker.



# 2016 LA Marathon Water Station Layout

## Mile 17

Water Station Captain: Amber Lea Walser  
Arrival Time: 6:00 a.m.

Fill: 12,000 Cups  
By: 7:30 a.m.

Qty.	Supply	Qty.	Supply	Qty.	Supply
1	AED(defibrillator)	1	Dolly	10	Toilets
2	Box Cutters	1	Garden Hose & Attachment	30	Tables - Total
1	Box of T-Shirts	1	First Aid Kit	N/A	Tables - Elite
2	Boxes Hand Wipes	10	Gatorade Containers	10	Tables - Gatorade
4	Boxes of Gloves	10	Gatorade Mixing Paddles	20	Tables - Water
4	Brooms/ Rakes	10	Plastic Pitchers	100	Trash Bags & Ties
21	Cases Gatorade Mix (4 gal/case) - 10K servings	2	Shovels	10	Trash Boxes & Case of Liners
11	Pallets of 1 Gal Water(1512 Gal = 30k servings water [1200 gal], 10k servings Gatorade [300 gal])	226	Stacking Sheets	4	Vaseline
25	Cases of Arrowhead Water Cups	10	Tables Skirts	2	LargeTrash Cans (for hydrant water)
8	Cases Gatorade Cups	42	Toilet Paper	1	Roll Liners for Recyclables

**Location:** Little Santa Monica, SW of Charleville (toilets at Moreno Dr on grass islands – 5 each side)

**Mile Marker:** On Rodeo Dr, R side, at SW corner Dayton Way.

\* Fire Hydrant  
T Toilets  
-- Tables  
DD Runner Shuttle



**Misc:** Please make sure to give your remaining water, cups, Gatorade, 3 tables, & 1 rake to the Late Water Station Captain.



## 2016 LA Marathon Water Station Layout

### Mile 18

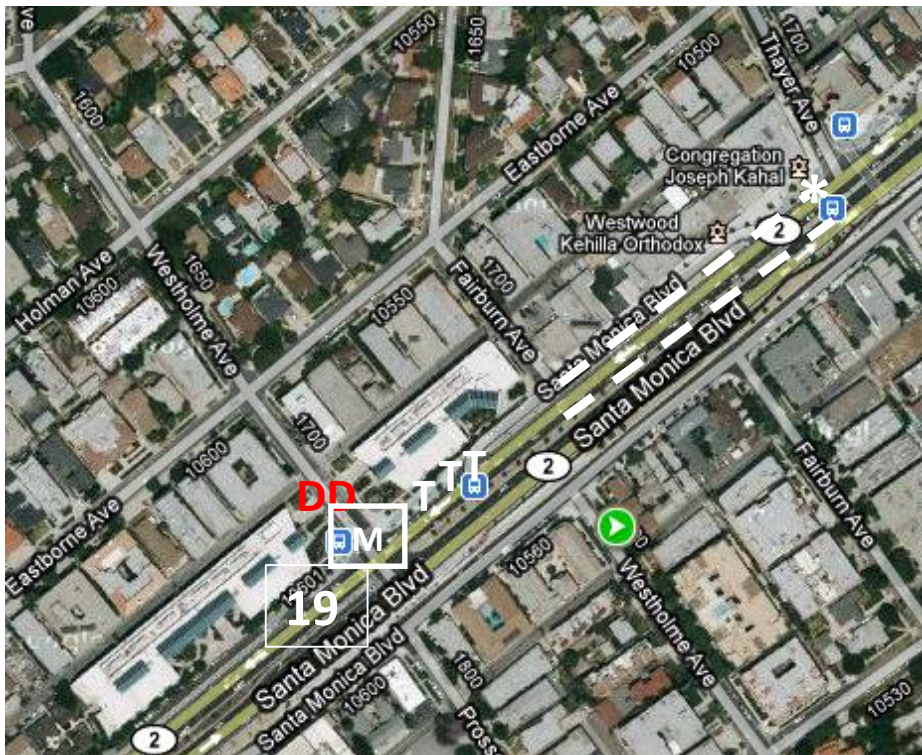
Water Station Captain: Surinderjit “Sambhi” Singh  
Arrival Time: 6:00 a.m.

Fill: 12,000 Cups  
By: 7:30 a.m.

Qty.	Supply	Qty.	Supply	Qty.	Supply
1	AED(defibrillator)	1	Dolly	10	Toilets
2	Box Cutters	1	Garden Hose & Attachment	30	Tables - Total
1	Box of T-Shirts	1	First Aid Kit	N/A	Tables - Elite
2	Boxes Hand Wipes	10	Gatorade Containers	10	Tables - Gatorade
4	Boxes of Gloves	10	Gatorade Mixing Paddles	20	Tables - Water
4	Brooms/ Rakes	10	Plastic Pitchers	100	Trash Bags & Ties
23.5	Cases Gatorade Mix (4 gal/case) - 10K servings	2	Shovels	10	Trash Boxes & Case of Liners
11	Pallets of 1 Gal Water(1512 Gal = 30k servings water [1200 gal], 10k servings Gatorade [300 gal])	226	Stacking Sheets	4	Vaseline
25	Cases of Arrowhead Water Cups	10	Tables Skirts	2	LargeTrash Cans (for hydrant water)
9	Cases Gatorade Cups	42	Toilet Paper	1	Roll Liners for Recyclables

**Location:** Santa Monica Blvd, between Thayer and Fairburn (MEDICAL – SM Blvd and Westholme)

**Mile Marker:** On (big) Santa Monica Blvd W-bound, R side, 4 yds before light pole on W side of Century Park E.



\* Fire Hydrant  
T Toilets  
-- Tables  
M Medical  
DD Runner Shuttle



## 2016 LA Marathon Water Station Layout Mile 19

Water Station Captain: Jasneet "Jay" Singh  
Arrival Time: 6:00 a.m.

Fill: 12,000 Cups  
By: 7:30 a.m.

Qty.	Supply	Qty.	Supply	Qty.	Supply
1	AED(defibrillator)	1	Dolly	10	Toilets
2	Box Cutters	1	Garden Hose & Attachment	38	Tables - Total
2	Box of T-Shirts (1-Vol, 1-Clif)	1	First Aid Kit	N/A	Tables - Elite
2	Boxes Hand Wipes	10	Gatorade Containers	10	Tables - Gatorade
4	Boxes of Gloves	10	Gatorade Mixing Paddles	20	Tables - Water
4	Brooms/ Rakes	10	Plastic Pitchers	100	Trash Bags & Ties
23.5	Cases Gatorade Mix (4 gal/case) - 10K servings	2	Shovels	10	Trash Boxes & Case of Liners
11	Pallets of 1 Gal Water(1512 Gal = 30k servings water [1200 gal], 10k servings Gatorade [300 gal])	226	Stacking Sheets	4	Vaseline
25	Cases of Arrowhead Water Cups	10	Tables/ Skirts	2	LargeTrash Cans (for hydrant water)
9	Cases Gatorade Cups	42	Toilet Paper	1	Roll Liners for Recyclables
2	Pallets Clif Shots	4	40 gallon water barrels	8	Tables – Clif Shot

**Location:** Santa Monica Blvd, West of Veteran – water, East of Veteran – Clif Shots(tables on north side ONLY)

**Mile Marker:** On Santa Monica Blvd W-bound, R side, in Metro Stop Zone, 18 yds W of Westholme Ave.

**\*\*\*Clif Shots will be distributed from this location. They must be given out BEFORE the water. 4 tables of Clif Shots on each side of the street.**



**Misc:** Please make sure to give your remaining water, cups, Gatorade, 3 tables, & 1 rake to the Late Water Station Captain.

## 2016 LA Marathon Water Station Layout

### Mile 20 (need to locate hydrant)

Water Station Captain:  
Arrival Time: 7:00 a.m.

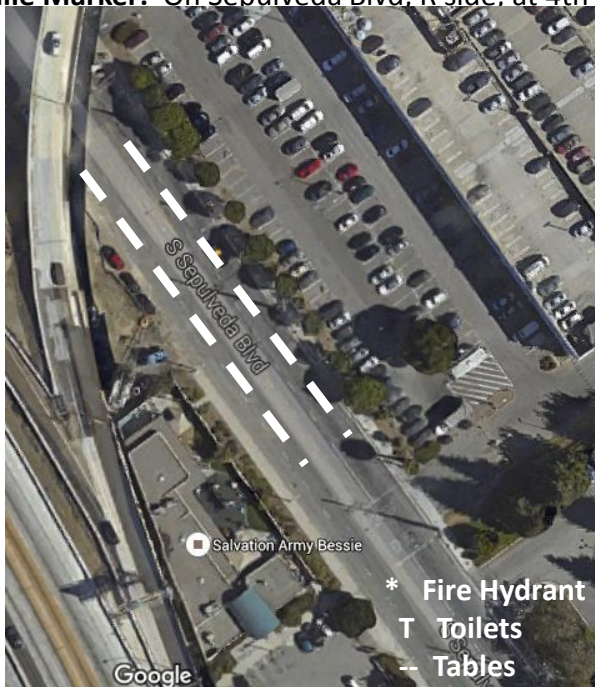
Fill: 12,000 Cups  
By: 8:30 a.m.

Qty.	Supply	Qty.	Supply	Qty.	Supply
1	AED(defibrillator)	1	Dolly	10	Toilets
2	Box Cutters	1	Garden Hose & Attachment	30	Tables - Total
1	Box of T-Shirts	1	First Aid Kit	0	Tables - Elite
2	Boxes Hand Wipes	10	Gatorade Containers	10	Tables - Gatorade
4	Boxes of Gloves	10	Gatorade Mixing Paddles	20	Tables - Water
4	Brooms/ Rakes	10	Plastic Pitchers	100	Trash Bags & Ties
23.5	Cases Gatorade Mix (4 gal/case) - 10K servings	2	Shovels	10	Trash Boxes & Case Liners
11	Pallets of 1 Gal Water(1512 Gal = 30k servings water [1200 gal], 10k servings Gatorade [300 gal])	226	Stacking Sheets	4	Vaseline
25	Cases of Arrowhead Water Cups	10	Tables Skirts	2	Large Trash Cans (for hydrant water)
9	Cases Gatorade Cups	42	Toilet Paper	1	Roll Liners for Recyclables

**Location:** Wilshire, south of Sepulveda in front of building at 1260 S Sepulveda (before fwy offramp)

**Medical:** Bad News Bears Park, Sepulveda and Ohio

**Mile Marker:** On Sepulveda Blvd, R side, at 4th meter (#430) N of Santa Monica Blvd.



**DD Down Dropped Runner Van located Ohio, east of Sepulveda**



## 2016 LA Marathon Water Station Layout

### ~~Mile 21~~ Eliminate this station

Water Station Captain: Anna Ramirez

Fill: 12,000 Cups

Arrival Time: 7:00 a.m.

By: 8:30 a.m.

Qty.	Supply	Qty.	Supply	Qty.	Supply
1	AED(defibrillator)	1	Dolly	10	Toilets
2	Box Cutters	1	Garden Hose & Attachment	30	Tables - Total
1	Box of T-Shirts	1	First Aid Kit	N/A	Tables - Elite
2	Boxes Hand Wipes	10	Gatorade Containers	10	Tables - Gatorade
4	Boxes of Gloves	10	Gatorade Mixing Paddles	20	Tables - Water
4	Brooms/ Rakes	10	Plastic Pitchers	100	Trash Bags & Ties
26	Cases Gatorade Mix (4 gal/case) - 10K servings	2	Shovels	10	Trash Boxes & Case of Liners
12	Pallets of 1 Gal Water(1512 Gal = 30k servings water [1200 gal], 10k servings Gatorade [300 gal])	226	Stacking Sheets	4	Vaseline
25	Cases of Arrowhead Water Cups	10	Tables/ Skirts	2	Large Trash Cans (for hydrant water)
10	Cases Gatorade Cups	42	Toilet Paper	1	Roll Liners for Recyclables

**Location:** VA Grounds – Eisenhower Ave and Dewey

**Mile Marker:** In VA grounds, on Dowlen Dr, L side, 101' before stop sign at Bonsall Ave.

**DD** Downed Drop Runner Van located on Bringham, just outside VA gates



**Misc:** Please make sure to give your remaining water, cups, Gatorade, 3 tables, & 1 rake to the Late Water Station Captain.

\* Fire Hydrant

T Toilets

-- Tables

DD Runner Shuttle



## 2016 LA Marathon Water Station Layout Mile 22

Water Station Captain: Emily Berkin  
Arrival Time: 7:00 a.m.

Fill: 12,000 Cups  
By: 8:30 a.m.

Qty.	Supply	Qty.	Supply	Qty.	Supply
1	AED(defibrillator)	1	Dolly	10	Toilets
2	Box Cutters	1	Garden Hose & Attachment	30	Tables - Total
1	Box of T-Shirts	1	First Aid Kit	N/A	Tables - Elite
2	Boxes Hand Wipes	10	Gatorade Containers	10	Tables - Gatorade
4	Boxes of Gloves	10	Gatorade Mixing Paddles	20	Tables - Water
4	Brooms/ Rakes	10	Plastic Pitchers	100	Trash Bags & Ties
26	Cases Gatorade Mix (4 gal/case) - 10K servings	2	Shovels	10	Trash Boxes & Case of Liners
12	Pallets of 1 Gal Water(1512 Gal = 30k servings water [1200 gal], 10k servings Gatorade [300 gal])	226	Stacking Sheets	4	Vaseline
25	Cases of Arrowhead Water Cups	10	Tables/ Skirts	2	LargeTrash Cans (for hydrant water)
10	Cases Gatorade Cups	42	Toilet Paper	1	Roll Liners for Recyclables

**Location:** San Vicente Blvd, just west of S Bundy Dr, in front of school (MEDICAL – SV Blvd & Gretna Green)

**Mile Marker:** On San Vicente W-bound, 2 yds past light pole in front of #11777.(just east of Montana)



\* Fire Hydrant  
T Toilets  
-- Tables  
M Medical  
DD Runner Shuttle

## 2016 LA Marathon Water Station Layout Mile 23

Water Station Captain: Shigeyuki Hatta  
Arrival Time: 7:00 a.m.

Fill: 12,000 Cups  
By: 8:30 a.m.

Qty.	Supply	Qty.	Supply	Qty.	Supply
1	AED(defibrillator)	1	Dolly	10	Toilets
2	Box Cutters	1	Garden Hose & Attachment	30	Tables - Total
1	Box of T-Shirts	1	First Aid Kit	N/A	Tables - Elite
2	Boxes Hand Wipes	10	Gatorade Containers	10	Tables - Gatorade
4	Boxes of Gloves	10	Gatorade Mixing Paddles	20	Tables - Water
4	Brooms/ Rakes	10	Plastic Pitchers	100	Trash Bags & Ties
28.75	Cases Gatorade Mix (4 gal/case) - 10K servings	2	Shovels	10	Trash Boxes & Case of Liners
12	Pallets of 1 Gal Water(1512 Gal = 30k servings water [1200 gal], 10k servings Gatorade [300 gal])	226	Stacking Sheets	4	Vaseline
22.5	Cases of Arrowhead Water Cups	10	Tables/ Skirts	2	Large Trash Cans (for hydrant water)
11	Cases Gatorade Cups	42	Toilet Paper	1	Roll Liners for Recyclables

**Location:** San Vicente Blvd, between 25<sup>th</sup> St and 24<sup>th</sup> St.

**Mile Marker:** On San Vicente E-bound, just past Bristol Ave, 5' past pole #389024M.



\* Fire Hydrant  
T Toilets  
-- Tables  
DD Runner Shuttle

**Misc:** Please make sure to give your remaining water, cups, Gatorade, 3 tables, & 1 rake to the Late Water Station Captain.



# 2016 LA Marathon Water Station Layout

## Mile 24

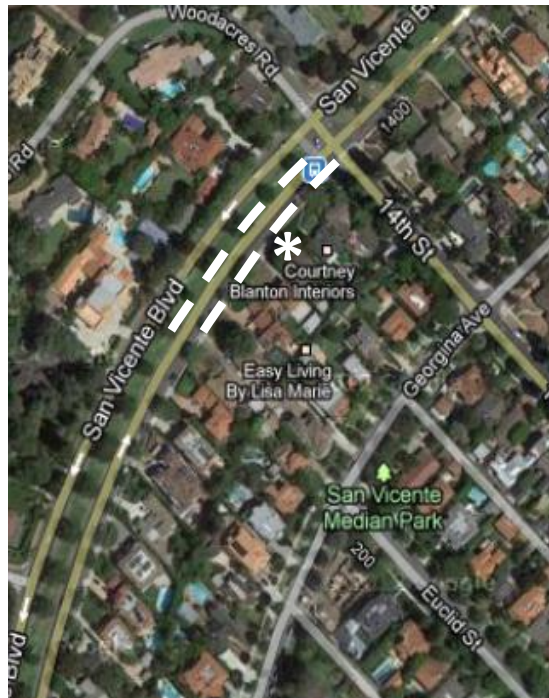
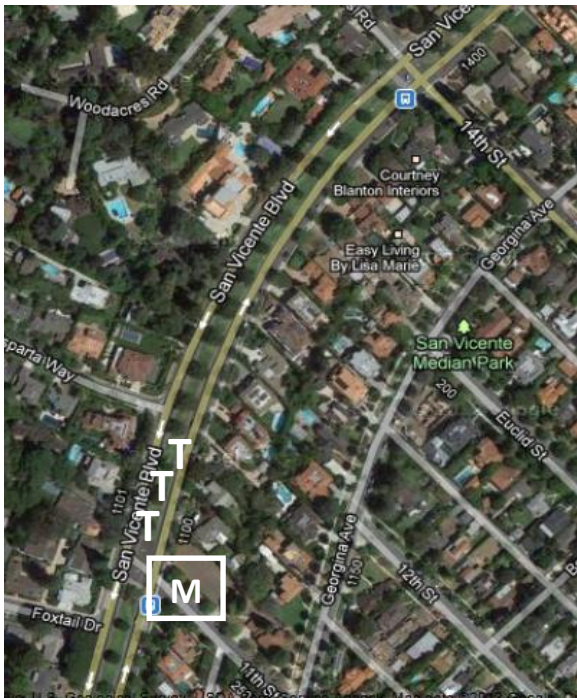
Water Station Captain: Erica Moya  
Arrival Time: 7:00 a.m.

Fill: 12,000 Cups  
By: 8:30 a.m.

Qty.	Supply	Qty.	Supply	Qty.	Supply
1	AED(defibrillator)	1	Dolly	10	Toilets
2	Box Cutters	1	Garden Hose & Attachment	38	Tables - Total
1	Box of T-Shirts	1	First Aid Kit	8	Tables - Elite
2	Boxes Hand Wipes	10	Gatorade Containers	10	Tables - Gatorade
4	Boxes of Gloves	10	Gatorade Mixing Paddles	20	Tables - Water
4	Brooms/ Rakes	10	Plastic Pitchers	100	Trash Bags & Ties
23.5	Cases Gatorade Mix (4 gal/case) - 10K servings	2	Shovels	10	Trash Boxes & Case of Liners
11	Pallets of 1 Gal Water(1512 Gal = 30k servings water [1200 gal], 10k servings Gatorade [300 gal])	226	Stacking Sheets	4	Vaseline
22.5	Cases of Arrowhead Water Cups	10	Tables/ Skirts	2	LargeTrash Cans (for hydrant water)
9	Cases Gatorade Cups	42	Toilet Paper	1	Roll Liners for Recyclables

**Location:** San Vicente Blvd, just west of 14<sup>th</sup> St. (MEDICAL – SV Blvd and 11<sup>th</sup> St)

**Mile Marker:** On San Vicente E-bound, on SW corner 18th St.



\* Fire Hydrant

T Toilets

-- Tables

M Medical



# 2016 LA Marathon Water Station Layout

## Mile 25

Water Station Captain: Cristina Cortes

Arrival Time: 7:00 a.m.

Late WS: Robin Myers 818 326 0423

Fill: 12,000 Cups

By: 8:30 a.m.

Qty.	Supply	Qty.	Supply	Qty.	Supply
1	AED(defibrillator)	1	Dolly	10	Toilets
2	Box Cutters	1	Garden Hose & Attachment	30	Tables - Total
1	Box of T-Shirts	1	First Aid Kit	N/A	Tables - Elite
2	Boxes Hand Wipes	10	Gatorade Containers	10	Tables - Gatorade
4	Boxes of Gloves	10	Gatorade Mixing Paddles	20	Tables - Water
4	Brooms/ Rakes	10	Plastic Pitchers	100	Trash Bags & Ties
23.5	Cases Gatorade Mix (4 gal/case) - 10K servings	2	Shovels	10	Trash Boxes & Case of Liners
8	Pallets of 1 Gal Water(1512 Gal = 30k servings water [1200 gal], 10k servings Gatorade [300 gal])	226	Stacking Sheets	4	Vaseline
15	Cases of Arrowhead Water Cups	10	Tables/ Skirts	2	LargeTrash Cans (for hydrant water)
9	Cases Gatorade Cups	42	Toilet Paper	1	Roll Clear Liners for Recyclables

**Location:** Ocean Ave, just past Marguerita Ave.

**Mile Marker:** On San Vicente E-bound, 10 yds W of entrance for #516.



\* Fire Hydrant  
T Toilets  
-- Tables

**Misc:** Please make sure to give your remaining water, cups, Gatorade, 3 tables, & 1 rake to the Late Water Station Captain.