



Water Station Manual
March 18, 2018

as of 1/1/18



Water/Medical Station Locations 2018

Mile	Water Station	Medical Station
1	Sunset N of Marion (Mile 2 WS in 2010)	
2	Broadway, mid-block between Cesar Chavez and Ord St	
3	1 st Street between Main St and Los Angeles St	
4	Hill Street, between 3 rd St and 2 nd St	
5	Glendale Blvd, between Bellevue and Kent St (near stairway)	
6		Sunset and Rosemount Ave
7	Sunset Blvd, between Descanso and Micheltorena	
8	Hollywood Blvd, between Virgil and Lyman	Sunset/Hollywood/Prospect – small park area
9	Hollywood Blvd between Hobart Blvd and Serrano Ave	
10	Hollywood Blvd, west of Bronson Ave	Hollywood and Gower
11	Hollywood Blvd, just east of Highland Ave	
12	Sunset Blvd, between Vista and Gardner	Sunset and Gardner
13	Sunset Blvd, between Hayworth and Laurel	
14	Sunset Blvd, west of Sunset Plaza Dr	San Vicente and Cynthia
15	Santa Monica Blvd, between Ramage and Wiley	
16	Burton Way at Foothill	Burton and Rexford in park
17	Little Santa Monica, just west of Charleville	
18	Santa Monica Blvd, between Thayer and Fairburn	SM Blvd and Westholme
19	Santa Monica Blvd, west of Veteran (Clif Shots east of Veteran)	
20	Sepulveda, just south of Wilshire	Sepulveda and Ohio – in parking lot
21		
22	San Vicente Blvd, just west of S Bundy Dr (in front of school)	SV and Gretna Green in median
23	San Vicente Blvd, between 25th St and 24th St	
24	San Vicente Blvd – just west of 14 th St.	SV and 11th St
25	Ocean Ave, just past Marguerita Ave	

We will be having late station volunteers at Mile 15, 17, 19, 23, 25.

Water Station locations are subject to change.

2018 Water Station Captain & Co-Captain Contacts

MILE	CAPTAIN	CELL PHONE	CO-CAPTAIN	CELL PHONE
2	Raymond Monk	213 500 9083	Alvin Hollier	832 215 6756
3	Michael Barnes	213 500 3701	Ronnie Brock	213 590 4821
4	Lily Woo	323 428 4282	Raymond Woo	323 428 4280
5	Belen Rivera	323 244 8484	Eric Rivera	
6	NO STATION			
7	Marc Bonifacio	714 697 3047	Lillian Lizarraga	818 521 2124
8	Kavi Raj Singh	714 210 9297	Gurpreet Kaur	
9	Jaspreet Singh	714 553 3135	Navjot Singh	323 456 6155
			Gurmeet Singh	310 869 0725
10	Sarbjit Singh	818 402 0878	Pargat Singh	661 713 7453
11	Jacqueline Williams	323 299 3406	Diane Hunter	818 442 3190
12	Amarjeet Singh	310 291 4835	Maninderjit Singh	310 906 8181
13	Edgar Ninofranco	323 422 7554	Rene Calvario	323 828 8862
14	Prem Singh	818 314 2872	Paramjit Singh	310 570 0295
15	Alisa Anderson	323 246 9444	Anthony Smith	
16	Kathi Rothner	310 625 5644	Helene Harris	310 489 8449
17/late	Amber Lea Walser	305 304 4196	Gonzalo Sanchez	313 420 7435
18	Surinderjit Singh	818 454 1730	Mandeep Sagoo	818 687 1775
19	Jasneet "Jay" Sethi	562 225 6812	J P Singh	951 237 8758
20	Harinder Singh	818 451 3584	Satvinder Singh	818 331 4255
21/late	NO STATION			
22	Emily Berkin	310 382 0144		
23/late	Shin Yoshino	310 733 9696	Barney M. Ono	
24	Iqbal Singh	818 257 0286	Baljeet Singh	323 497 3570
25	Adan Pineda	909 320 9891	Severo Garcia	626 862 9652
25 late	Robyn Myers	818 326 0423	Denise Nossett	

Carmen Santiago cell: 610-914-8464
Elite Athlete Fluids Coordinator, Scott Winnier 808-660-6048

2018 LA Marathon Water Station Layout

Mile 1

Water Station Captain: Portos Only

Arrival Time:

Fill:

By:

Qty.	Supply	Qty.	Supply	Qty.	Supply
	AED(defibrillator)		Dolly	20	Toilets
	Box Cutters		Garden Hose & Attachment		Tables - Total
	Box of T-Shirts		First Aid Kit		Tables - Elite
	Boxes Hand Wipes		Gatorade Containers		Tables - Gatorade
	Boxes of Gloves		Gatorade Mixing Paddles		Tables - Water
	Brooms/ Rakes		Plastic Pitchers		Trash Bags & Ties
	Cases Gatorade Mix (4 gal/case) - 10K servings		Shovels		Trash Boxes
	Pallets of 1 Gal Water(1512 Gal = 30k servings water [1200 gal], 10k servings Gatorade [300 gal])		Stacking Sheets		Vaseline
	Cases of Arrowhead Water Cups		Tables/ Skirts		LargeTrash Cans (for hydrant water)
	Cases Gatorade Cups	42	Toilet Paper		

Location: Sunset Blvd, just north of Marion Avenue

Mile Marker: On Sunset Blvd, L side, across from #1228 and 26' past Dept of Water marker in sidewalk



- * Fire Hydrant w/ Eddie Valve
- T Toilets
- Tables

2018 LA Marathon Water Station Layout

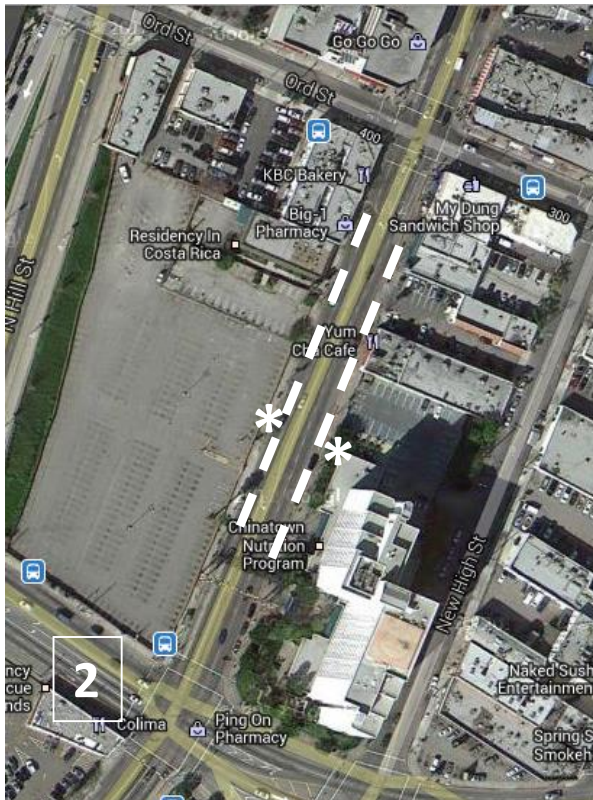
Mile 2

Water Station Captain: Raymond Monk
Arrival Time: 4:30 a.m.

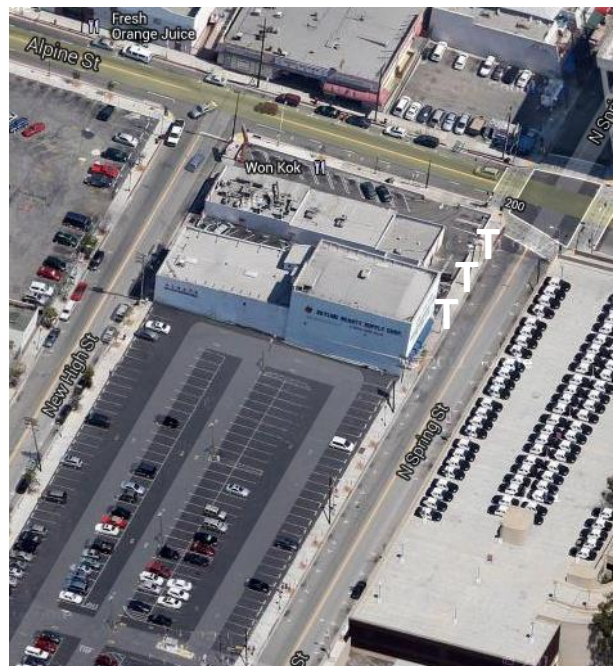
Fill: 12,000 Cups
By: 6:00 a.m.

Qty.	Supply	Qty.	Supply	Qty.	Supply
1	AED(defibrillator)	1	Dolly	14	Toilets
2	Box Cutters	1	Garden Hose & Attachment	34	Tables - Total
1	Box of T-Shirts	1	First Aid Kit	N/A	Tables - Elite
2	Boxes Hand Wipes	10	Gatorade Containers	10	Tables - Gatorade
4	Boxes of Gloves	10	Gatorade Mixing Paddles	24	Tables - Water
4	Brooms/ Rakes	10	Plastic Pitchers	100	Trash Bags & Ties
13	Cases Gatorade Mix (4 gal/case) - 10K servings	2	Shovels	10	Trash Boxes & 1 Case of Liners
7	Pallets of 1 Gal Water(1512 Gal = 30k servings water [1200 gal], 10k servings Gatorade [300 gal])	226	Stacking Sheets	4	Vaseline
15	Cases of Arrowhead Water Cups	10	Gatorade Table Skirts	2	Large Trash Cans (for hydrant water)
5	Cases Gatorade Cups	42	Toilet Paper	1	Roll of Clear Liners recyclable

Location: Broadway, mid block btw Cesar Chavez and Ord St (toilets are on Spring, south of Alpine)
Mile Marker: On N Broadway, L side, 29'7" S of the 1st hydrant N of Caesar Chavez and 5'2" before manhole



- * Fire Hydrant
- T Toilets
- Tables



2018 LA Marathon Water Station Layout

Mile 3

Water Station Captain: Ronnie Brock
Arrival Time: 5:30 a.m.

Fill: 12,000 Cups
By: 7:00 a.m.

Qty.	Supply	Qty.	Supply	Qty.	Supply
1	AED(defibrillator)	1	Dolly	14	Toilets
2	Box Cutters	1	Garden Hose & Attachment	34	Tables - Total
1	Box of T-Shirts	1	First Aid Kit	N/A	Tables - Elite
2	Boxes Hand Wipes	10	Gatorade Containers	10	Tables - Gatorade
4	Boxes of Gloves	10	Gatorade Mixing Paddles	24	Tables - Water
4	Brooms/ Rakes	16	Plastic Pitchers	100	Trash Bags & Ties
13	Cases Gatorade Mix (4 gal/case) - 10K servings	2	Shovels	10	Trash Boxes & 1 Case of Liners
7	Pallets of 1 Gal Water(1512 Gal = 30k servings water [1200 gal], 10k servings Gatorade [300 gal])	226	Stacking Sheets	4	Vaseline
15	Cases of Arrowhead Water Cups	10	Gatorade Tables Skirts	2	Large Trash Cans (for hydrant water)
5	Cases Gatorade Cups	42	Toilet Paper	1	Roll Clear Liners recyclables

Location: 1st St, between Main St and Los Angeles St

Mile Marker: On Spring St, L Side, between Temple and 1st St, 49' before 2nd light pole on left, counting from 1st St



2018 LA Marathon Water Station Layout

Mile 4

Water Station Captain:
Arrival Time: 5:30 a.m.

Fill: 12,000 Cups
By: 7:00 a.m.

Qty.	Supply	Qty.	Supply	Qty.	Supply
1	AED(defibrillator)	1	Dolly	14	Toilets
2	Box Cutters	1	Garden Hose & Attachment	35	Tables - Total
1	Box of T-Shirts	1	First Aid Kit	1	Tables - Elite
2	Boxes Hand Wipes	10	Gatorade Containers	10	Tables - Gatorade
4	Boxes of Gloves	10	Gatorade Mixing Paddles	24	Tables - Water
4	Brooms/ Rakes	10	Plastic Pitchers	100	Trash Bags & Ties
16	Cases Gatorade Mix (4 gal/case) - 10K servings	2	Shovels	10	Trash Boxes & Case of Liners
7	Pallets of 1 Gal Water(1512 Gal = 30k servings water [1200 gal], 10k servings Gatorade [300 gal])	226	Stacking Sheets	4	Vaseline
15	Cases of Water Cups	10	Gatorade Table Skirts	2	LargeTrash Cans (for hydrant water)
6	Cases Gatorade Cups	42	Toilet Paper	1	Roll of Clear Liners for Recyclables

Location: Hill Street, Between 3rd St and 2nd St

Mile Marker: On 3rd St, R side, 5 yds N of light pole on NW corner Broadway



2018 LA Marathon Water Station Layout

Mile 5

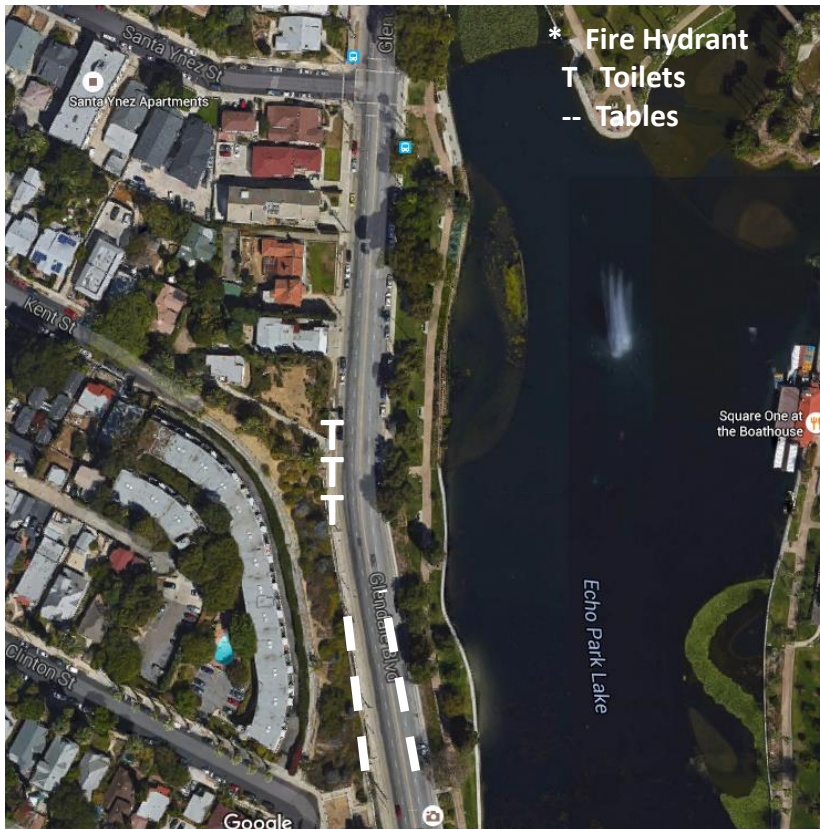
Water Station Captain: Belen Rivera
Arrival Time: 5:30 a.m.

Fill: 12,000 Cups
By: 7:00 a.m.

Qty.	Supply	Qty.	Supply	Qty.	Supply
1	AED(defibrillator)	1	Dolly	14	Toilets
2	Box Cutters	1	Garden Hose & Attachment	32	Tables - Total
1	Box of T-Shirts	1	First Aid Kit	N/A	Tables - Elite
2	Boxes Hand Wipes	10	Gatorade Containers	10	Tables - Gatorade
4	Boxes of Gloves	10	Gatorade Mixing Paddles	22	Tables - Water
4	Brooms/ Rakes	10	Plastic Pitchers	100	Trash Bags & Ties
16	Cases Gatorade Mix (4 gal/case) - 10K servings	2	Shovels	10	Trash Boxes & 1 Case of Liners
7	Pallets of 1 Gal Water(1512 Gal = 30k servings water [1200 gal], 10k servings Gatorade [300 gal])	226	Stacking Sheets	4	Vaseline
15	Cases of Water Cups	10	Tables/ Skirts	2	LargeTrash Cans (for hydrant water)
6	Cases Gatorade Cups	42	Toilet Paper	1	Roll Clear Liners for Recyclables

Location: Glendale Blvd, north of Bellevue, Toilets on Glendale, just south of Kent near stairway with painted mural

Mile Marker #6: On Glendale Blvd, R side, across from Clinton St Stairway, in line with N stairway



2018 LA Marathon Water Station Layout

Mile 7

Water Station Captain: Dorothy Chu
Arrival Time: 5:30 a.m.

Fill: 12,000 Cups
By: 7:00 a.m.

Qty.	Supply	Qty.	Supply	Qty.	Supply
1	AED(defibrillator)	1	Dolly	12	Toilets
2	Box Cutters	1	Garden Hose & Attachment	30	Tables - Total
1	Box of T-Shirts	1	First Aid Kit	N/A	Tables - Elite
2	Boxes Hand Wipes	10	Gatorade Containers	10	Tables - Gatorade
4	Boxes of Gloves	10	Gatorade Mixing Paddles	20	Tables - Water
4	Brooms/ Rakes	10	Plastic Pitchers	100	Trash Bags & Ties
18	Cases Gatorade Mix (4 gal/case) - 10K servings	2	Shovels	10	Trash Boxes & Case of Liners
10	Pallets of 1 Gal Water(1512 Gal = 30k servings water [1200 gal], 10k servings Gatorade [300 gal])	226	Stacking Sheets	4	Vaseline
22.5	Cases of Arrowhead Water Cups	N/A	Tables/ Skirts	2	LargeTrash Cans (for hydrant water)
7	Cases Gatorade Cups	42	Toilet Paper	1	Roll Liners for Recyclables

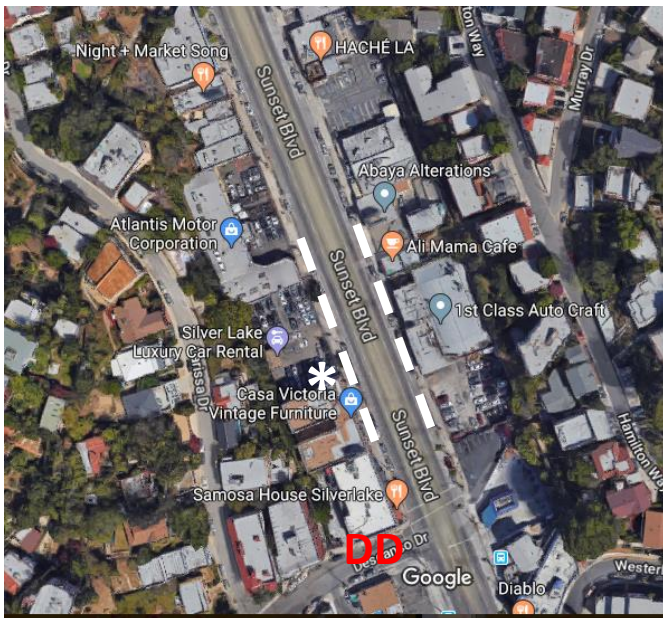
Location: Sunset Blvd, between Descanso and Micheltorena

Mile Marker: On Sunset Blvd, R side, approx. 100 yds past Benton Way, in front of #2723, next to meter SL228

* Fire Hydrant

T Toilets

-- Tables



2018 LA Marathon Water Station Layout

Mile 8

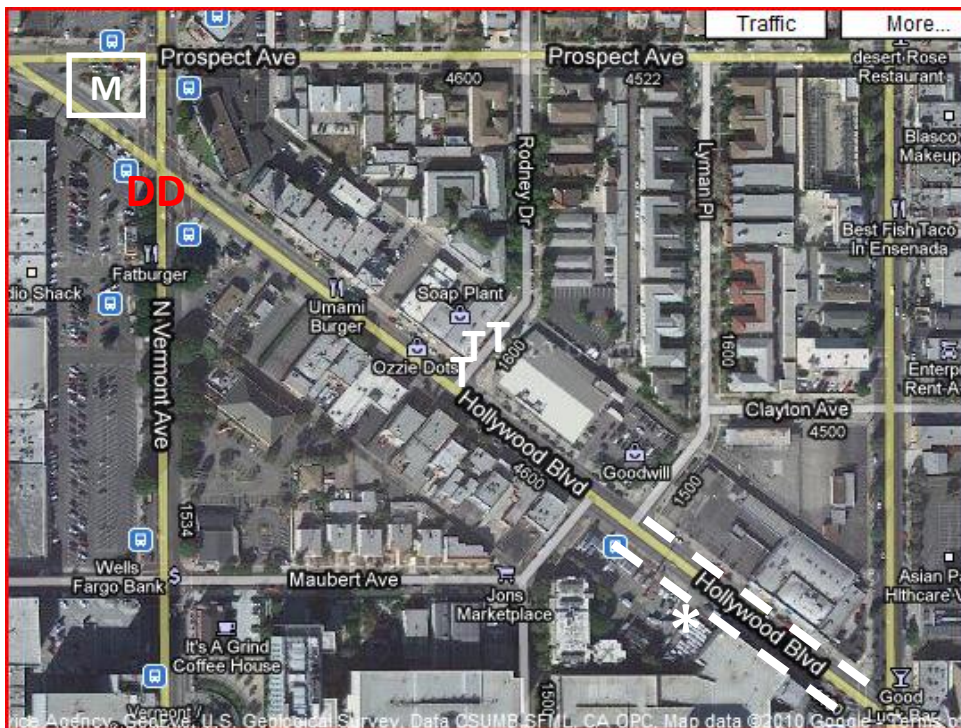
Water Station Captain: Marc Bonifacio
Arrival Time: 5:30 a.m.

Fill: 12,000 Cups
By: 7:00 a.m.

Qty.	Supply	Qty.	Supply	Qty.	Supply
1	AED(defibrillator)	1	Dolly	12	Toilets
2	Box Cutters	1	Garden Hose & Attachment	31	Tables - Total
1	Box of T-Shirts	1	First Aid Kit	1	Tables - Elite
2	Boxes Hand Wipes	10	Gatorade Containers	10	Tables - Gatorade
4	Boxes of Gloves	10	Gatorade Mixing Paddles	20	Tables - Water
4	Brooms/ Rakes	10	Plastic Pitchers	100	Trash Bags & Ties
21	Cases Gatorade Mix (4 gal/case) - 10K servings	2	Shovels	10	Trash Boxes & Case of Liners
10	Pallets of 1 Gal Water(1512 Gal = 30k servings water [1200 gal], 10k servings Gatorade [300 gal])	226	Stacking Sheets	4	Vaseline
22.5	Cases of Arrowhead Water Cups	10	Tables/ Skirts	2	LargeTrash Cans (for hydrant water)
8	Cases Gatorade Cups	42	Toilet Paper	1	Roll Liners for Recyclables

Location: Hollywood Blvd, between Virgil and Lyman (MEDICAL-Hollywood/Vermont/Prospect on sidewalk)

Mile Marker: On Sunset Blvd, R side, at 4015 front door



* Fire Hydrant
T Toilets
-- Tables
M Medical
DD Runner Shuttle

2018 LA Marathon Water Station Layout

Mile 9

Water Station Captain: Jaspreet Singh
Arrival Time: 5:45 a.m.

Fill: 12,000 Cups
By: 7:15 a.m.

Qty.	Supply	Qty.	Supply	Qty.	Supply
1	AED(defibrillator)	1	Dolly	10	Toilets
2	Box Cutters	1	Garden Hose & Attachment	30	Tables - Total
1	Box of T-Shirts	1	First Aid Kit	N/A	Tables - Elite
2	Boxes Hand Wipes	10	Gatorade Containers	10	Tables - Gatorade
4	Boxes of Gloves	10	Gatorade Mixing Paddles	20	Tables - Water
4	Brooms/ Rakes	10	Plastic Pitchers	100	Trash Bags & Ties
21	Cases Gatorade Mix (4 gal/case) - 10K servings	2	Shovels	10	Trash Boxes & case of Liners
10	Pallets of 1 Gal Water(1512 Gal = 30k servings water [1200 gal], 10k servings Gatorade [300 gal])	226	Stacking Sheets	4	Vaseline
22.5	Cases of Arrowhead Water Cups	10	Tables/ Skirts	2	LargeTrash Cans (for hydrant water)
8	Cases Gatorade Cups	42	Toilet Paper	1	Roll Liners for Recyclables

Location: Hollywood Blvd. between Hobart Blvd and Serrano Ave.

Mile Marker: On Hollywood Blvd, R side, next to meter VH124, the 2nd meter past New Hampshire



* Fire Hydrant
T Toilets
-- Tables
DD Runner Shuttle

2018 LA Marathon Water Station Layout

Mile 10

Water Station Captain: Sarbjit Singh
Arrival Time: 5:45 a.m.

Fill: 12,000 Cups
By: 7:15 a.m.

Qty.	Supply	Qty.	Supply	Qty.	Supply
1	AED(defibrillator)	1	Dolly	10	Toilets
2	Box Cutters	1	Garden Hose & Attachment	30	Tables - Total
1	Box of T-Shirts	1	First Aid Kit	N/A	Tables - Elite
2	Boxes Hand Wipes	10	Gatorade Containers	10	Tables - Gatorade
4	Boxes of Gloves	10	Gatorade Mixing Paddles	20	Tables - Water
4	Brooms/ Rakes	10	Plastic Pitchers	100	Trash Bags & Ties
21	Cases Gatorade Mix (4 gal/case) - 10K servings	2	Shovels	10	Trash Boxes & Case of Liners
10	Pallets of 1 Gal Water(1512 Gal = 30k servings water [1200 gal], 10k servings Gatorade [300 gal])	226	Stacking Sheets	4	Vaseline
22.5	Cases of Arrowhead Water Cups	10	Tables/ Skirts	2	LargeTrash Cans (for hydrant water)
8	Cases Gatorade Cups	42	Toilet Paper	1	Roll Liners for Recyclables

Location: Hollywood Blvd, west of Bronson Ave (MEDICAL – Hollywood and Gower)

Mile Marker: On Hollywood Blvd, R side, middle of St Andrews Pl, south intersection



* Fire Hydrant
T Toilets
-- Tables
M Medical
DD Runner Shuttle

2018 LA Marathon Water Station Layout

Mile 11

Water Station Captain: Jacqueline Williams
Arrival Time: 5:45 a.m.

Fill: 12,000 Cups
By: 7:15 a.m.

Qty.	Supply	Qty.	Supply	Qty.	Supply
1	AED(defibrillator)	1	Dolly	10	Toilets
2	Box Cutters	1	Garden Hose & Attachment	30	Tables - Total
1	Box of T-Shirts	1	First Aid Kit	N/A	Tables - Elite
2	Boxes Hand Wipes	10	Gatorade Containers	10	Tables - Gatorade
4	Boxes of Gloves	10	Gatorade Mixing Paddles	20	Tables - Water
4	Brooms/ Rakes	10	Plastic Pitchers	100	Trash Bags & Ties
21	Cases Gatorade Mix (4 gal/case) - 10K servings	2	Shovels	10	Trash Boxes & Case of Liners
10	Pallets of 1 Gal Water(1512 Gal = 30k servings water [1200 gal], 10k servings Gatorade [300 gal])	226	Stacking Sheets	4	Vaseline
22.5	Cases of Arrowhead Water Cups	10	Tables/ Skirts	2	LargeTrash Cans (for hydrant water)
8	Cases Gatorade Cups	42	Toilet Paper	1	Roll Liners for Recyclables

Location: Hollywood Blvd, just east of Highland Ave (Toilets are on Orange, S of Hawthorn)

Mile Marker: On Hollywood Blvd, R side, #6363 front door

* Fire Hydrant
T Toilets
-- Tables
DD Runner Shuttle



2018 LA Marathon Water Station Layout

Mile 12

Water Station Captain: Amarjeet Singh

Fill: 12,000 Cups

Arrival Time: 5:45 a.m.

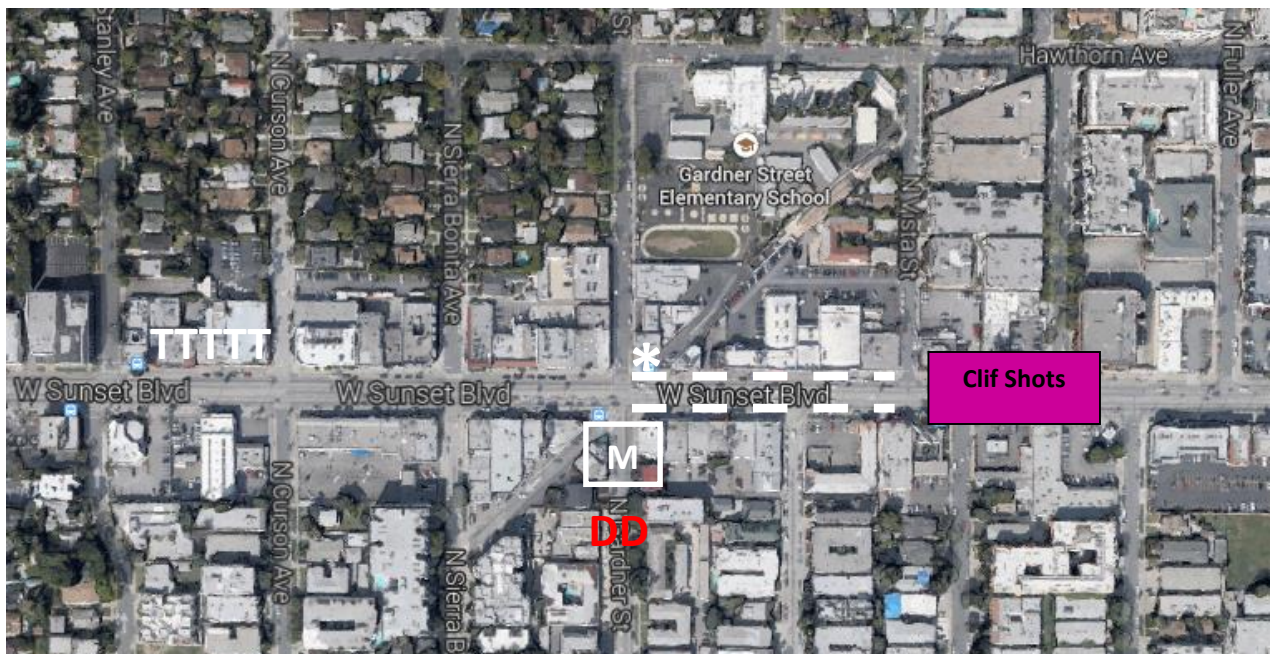
By: 7:15 a.m.

Qty.	Supply	Qty.	Supply	Qty.	Supply
1	AED(defibrillator)	1	Dolly	10	Toilets
2	Box Cutters	1	Garden Hose & Attachment	31	Tables - Total
2	Box of T-Shirts (1-Vol)	1	First Aid Kit	1	Tables - Elite
2	Boxes Hand Wipes	10	Gatorade Containers	10	Tables - Gatorade
4	Boxes of Gloves	10	Gatorade Mixing Paddles	20	Tables - Water
4	Brooms/ Rakes	10	Plastic Pitchers	100	Trash Bags & Ties
21	Cases Gatorade Mix (4 gal/case) - 10K servings	2	Shovels	10	Trash Boxes & Case of Liners
10	Pallets of 1 Gal Water(1512 Gal = 30k servings water [1200 gal], 10k servings Gatorade [300 gal])	226	Stacking Sheets	4	Vaseline
22.5	Cases of Arrowhead Water Cups	10	Tables/ Skirts	2	LargeTrash Cans (for hydrant water)
8	Cases Gatorade Cups	42	Toilet Paper	1	Roll Liners for Recyclables
2	Pallets Clif Shots	4	40 gallon water barrels	8	Tables – Clif Shot

Location: Sunset Blvd, between Vista and Gardner (MEDICAL – Sunset and Gardner)

Mile Marker: On Sunset Blvd, R side, middle of #7023 driveway, “Days Inn”

*****Clif Shots will be distributed from this location. They must be given out BEFORE the water. 4 tables of Clif Shots on each side of the street.**



2018 LA Marathon Water Station Layout

Mile 13

Water Station Captain: Edgar Ninofranco
Arrival Time: 6:00 a.m.

Fill: 12,000 Cups
By: 7:30 a.m.

Qty.	Supply	Qty.	Supply	Qty.	Supply
1	AED(defibrillator)	1	Dolly	10	Toilets
2	Box Cutters	1	Garden Hose & Attachment	30	Tables - Total
1	Box of T-Shirts	1	First Aid Kit	N/A	Tables - Elite
2	Boxes Hand Wipes	10	Gatorade Containers	10	Tables - Gatorade
4	Boxes of Gloves	10	Gatorade Mixing Paddles	20	Tables - Water
4	Brooms/ Rakes	10	Plastic Pitchers	100	Trash Bags & Ties
21	Cases Gatorade Mix (4 gal/case) - 10K servings	2	Shovels	10	Trash Boxes & Case of Liners
10	Pallets of 1 Gal Water(1512 Gal = 30k servings water [1200 gal], 10k servings Gatorade [300 gal])	226	Stacking Sheets	4	Vaseline
22.5	Cases of Arrowhead Water Cups	10	Tables/ Skirts	2	LargeTrash Cans (for hydrant water)
8	Cases Gatorade Cups	42	Toilet Paper	1	Roll Liners for Recyclables

Location: Sunset Blvd between Hayworth and Laurel

Mile Marker: On Sunset Blvd, R side, between Odgen Dr and Orange Grove Ave, 1 yd past light pole at #7811 Sunset



* Fire Hydrant
T Toilets
-- Tables
DD Runner Shuttle

2018 LA Marathon Water Station Layout

Mile 14

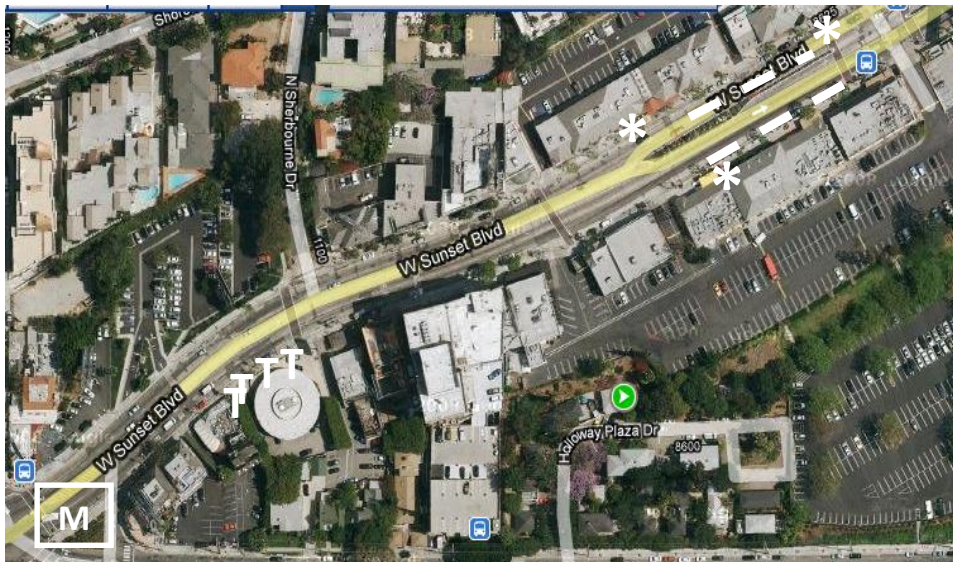
Water Station Captain: Prem Singh
Arrival Time: 6:00 a.m.

Fill: 12,000 Cups
By: 7:30 a.m.

Qty.	Supply	Qty.	Supply	Qty.	Supply
1	AED(defibrillator)	1	Dolly	10	Toilets
2	Box Cutters	1	Garden Hose & Attachment	30	Tables - Total
1	Box of T-Shirts	1	First Aid Kit	N/A	Tables - Elite
2	Boxes Hand Wipes	10	Gatorade Containers	10	Tables - Gatorade
4	Boxes of Gloves	10	Gatorade Mixing Paddles	20	Tables - Water
4	Brooms/ Rakes	10	Plastic Pitchers	100	Trash Bags & Ties
21	Cases Gatorade Mix (4 gal/case) - 10K servings	2	Shovels	10	Trash Boxes & case of Liners
10	Pallets of 1 Gal Water(1512 Gal = 30k servings water [1200 gal], 10k servings Gatorade [300 gal])	226	Stacking Sheets	4	Vaseline
22.5	Cases of Arrowhead Water Cups	10	Tables/ Skirts	2	LargeTrash Cans (for hydrant water)
8	Cases Gatorade Cups	42	Toilet Paper	1	Roll Liners for Recyclables

Location: Sunset Blvd, west of Sunset Plaza Dr (MEDICAL – Sunset and Holloway)

Mile Marker: On Sunset Blvd, R side, just before La Cienega, even with front door for #8495 (Pink Dot)



* Fire Hydrant
T Toilets
-- Tables
M Medical
DD Runner Shuttle

DD Down Dropped Runner Van located on Larrabee, south of Sunset

2018 LA Marathon Water Station Layout Mile 15

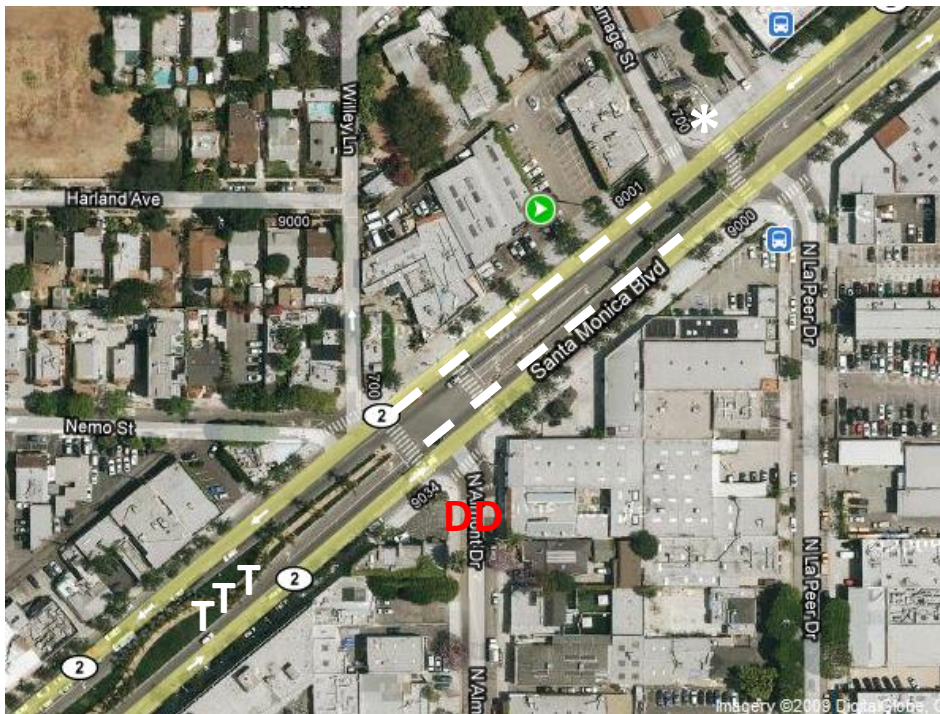
Water Station Captain: Alisa Anderson
Arrival Time: 6:00 a.m.

Fill: 12,000 Cups
By: 7:30 a.m.

Qty.	Supply	Qty.	Supply	Qty.	Supply
1	AED(defibrillator)	1	Dolly	10	Toilets
2	Box Cutters	1	Garden Hose & Attachment	30	Tables - Total
1	Box of T-Shirts	1	First Aid Kit	N/A	Tables - Elite
2	Boxes Hand Wipes	10	Gatorade Containers	10	Tables - Gatorade
4	Boxes of Gloves	10	Gatorade Mixing Paddles	20	Tables - Water
4	Brooms/ Rakes	10	Plastic Pitchers	100	Trash Bags & Ties
21	Cases Gatorade Mix (4 gal/case) - 10K servings	2	Shovels	10	Trash Boxes & Case of Liners
10	Pallets of 1 Gal Water(1512 Gal = 30k servings water [1200 gal], 10k servings Gatorade [300 gal])	226	Stacking Sheets	4	Vaseline
22.5	Cases of Arrowhead Water Cups	10	Tables Skirts	2	LargeTrash Cans (for hydrant water)
8	Cases Gatorade Cups	42	Toilet Paper	1	Roll Liners for Recyclables

Location: Santa Monica Blvd, between Ramage and Wiley

Mile Marker: On San Vicente, R side, next to hydrant on NW corner at SM Blvd



* Fire Hydrant
T Toilets
-- Tables
DD Runner Shuttle

Misc: Please make sure to give your remaining water, cups, Gatorade, 3 tables, & 1 rake to the Late Water Station Captain.

2018 LA Marathon Water Station Layout

Mile 16

Water Station Captain: Kathi Rothner
Arrival Time: 6:00 a.m.

Fill: 12,000 Cups
By: 7:30 a.m.

Qty.	Supply	Qty.	Supply	Qty.	Supply
1	AED(defibrillator)	1	Dolly	10	Toilets
2	Box Cutters	1	Garden Hose & Attachment	31	Tables - Total
1	Box of T-Shirts	1	First Aid Kit	1	Tables - Elite
2	Boxes Hand Wipes	10	Gatorade Containers	10	Tables - Gatorade
4	Boxes of Gloves	10	Gatorade Mixing Paddles	20	Tables - Water
4	Brooms/ Rakes	10	Plastic Pitchers	100	Trash Bags & Ties
21	Cases Gatorade Mix (4 gal/case) - 10K servings	2	Shovels	10	Trash Boxes & Case of Liners
10	Pallets of 1 Gal Water(1512 Gal = 30k servings water [1200 gal], 10k servings Gatorade [300 gal])	226	Stacking Sheets	4	Vaseline
22.5	Cases of Arrowhead Water Cups	10	Tables Skirts	2	LargeTrash Cans (for hydrant water)
8	Cases Gatorade Cups	42	Toilet Paper	1	Roll Liners for Recyclables

Location: Burton Way starting at Foothill Rd and continuing east
(MEDICAL – Rexford Park, Rexford and Burton)

Mile Marker: On Doheny, R side, 18 yds N of light pole on NW corner of Burton Way



2018 LA Marathon Water Station Layout

Mile 17

Water Station Captain: Amber Lea Walser
Arrival Time: 6:00 a.m.

Fill: 12,000 Cups
By: 7:30 a.m.

Qty.	Supply	Qty.	Supply	Qty.	Supply
1	AED(defibrillator)	1	Dolly	10	Toilets
2	Box Cutters	1	Garden Hose & Attachment	30	Tables - Total
1	Box of T-Shirts	1	First Aid Kit	N/A	Tables - Elite
2	Boxes Hand Wipes	10	Gatorade Containers	10	Tables - Gatorade
4	Boxes of Gloves	10	Gatorade Mixing Paddles	20	Tables - Water
4	Brooms/ Rakes	10	Plastic Pitchers	100	Trash Bags & Ties
21	Cases Gatorade Mix (4 gal/case) - 10K servings	2	Shovels	10	Trash Boxes & Case of Liners
11	Pallets of 1 Gal Water(1512 Gal = 30k servings water [1200 gal], 10k servings Gatorade [300 gal])	226	Stacking Sheets	4	Vaseline
25	Cases of Arrowhead Water Cups	10	Tables Skirts	2	LargeTrash Cans (for hydrant water)
8	Cases Gatorade Cups	42	Toilet Paper	1	Roll Liners for Recyclables

Location: Little Santa Monica, SW of Charleville (toilets at Moreno Dr on grass islands – 5 each side)

Mile Marker: On Rodeo Dr, L Side, next to square metal cover in front of #400
6 yds N of light pole on NE corner Brighton Way

* Fire Hydrant
T Toilets
-- Tables
DD Runner Shuttle



Misc: Please make sure to give your remaining water, cups, Gatorade, 3 tables, & 1 rake to the Late Water Station Captain.

2018 LA Marathon Water Station Layout Mile 18

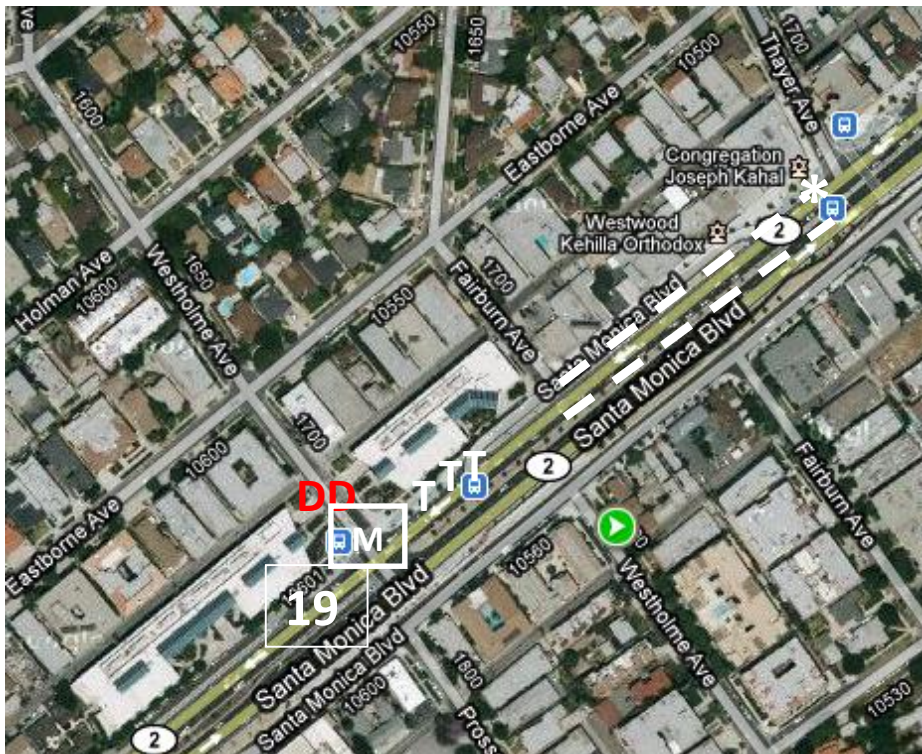
Water Station Captain: Surinderjit "Sambhi" Singh
Arrival Time: 6:00 a.m.

Fill: 12,000 Cups
By: 7:30 a.m.

Qty.	Supply	Qty.	Supply	Qty.	Supply
1	AED(defibrillator)	1	Dolly	10	Toilets
2	Box Cutters	1	Garden Hose & Attachment	30	Tables - Total
1	Box of T-Shirts	1	First Aid Kit	N/A	Tables - Elite
2	Boxes Hand Wipes	10	Gatorade Containers	10	Tables - Gatorade
4	Boxes of Gloves	10	Gatorade Mixing Paddles	20	Tables - Water
4	Brooms/ Rakes	10	Plastic Pitchers	100	Trash Bags & Ties
23.5	Cases Gatorade Mix (4 gal/case) - 10K servings	2	Shovels	10	Trash Boxes & Case of Liners
11	Pallets of 1 Gal Water(1512 Gal = 30k servings water [1200 gal], 10k servings Gatorade [300 gal])	226	Stacking Sheets	4	Vaseline
25	Cases of Arrowhead Water Cups	10	Tables Skirts	2	LargeTrash Cans (for hydrant water)
9	Cases Gatorade Cups	42	Toilet Paper	1	Roll Liners for Recyclables

Location: Santa Monica Blvd, between Thayer and Fairburn (MEDICAL – SM Blvd and Westholme)

Mile Marker: On (little) Santa Monica Blvd W, R side, middle of Moreno Dr



- * Fire Hydrant
- T Toilets
- Tables
- M Medical
- DD Runner Shuttle

2018 LA Marathon Water Station Layout Mile 19

Water Station Captain: Jasneet “Jay” Singh
Arrival Time: 6:00 a.m.

Fill: 12,000 Cups
By: 7:30 a.m.

Qty.	Supply	Qty.	Supply	Qty.	Supply
1	AED(defibrillator)	1	Dolly	10	Toilets
2	Box Cutters	1	Garden Hose & Attachment	38	Tables - Total
2	Box of T-Shirts (1-Vol, 1-Clif)	1	First Aid Kit	N/A	Tables - Elite
2	Boxes Hand Wipes	10	Gatorade Containers	10	Tables - Gatorade
4	Boxes of Gloves	10	Gatorade Mixing Paddles	20	Tables - Water
4	Brooms/ Rakes	10	Plastic Pitchers	100	Trash Bags & Ties
23.5	Cases Gatorade Mix (4 gal/case) - 10K servings	2	Shovels	10	Trash Boxes & Case of Liners
11	Pallets of 1 Gal Water(1512 Gal = 30k servings water [1200 gal], 10k servings Gatorade [300 gal])	226	Stacking Sheets	4	Vaseline
25	Cases of Arrowhead Water Cups	10	Tables/ Skirts	2	LargeTrash Cans (for hydrant water)
9	Cases Gatorade Cups	42	Toilet Paper	1	Roll Liners for Recyclables
2	Pallets Clif Shots	4	40 gallon water barrels	8	Tables – Clif Shot

Location: Santa Monica Blvd, West of Veteran – water, East of Veteran – Clif Shots(tables on north side ONLY)

Mile Marker: On Santa Monica Blvd W-bound, at middle of driveway to #10537

*****Clif Shots will be distributed from this location. They must be given out BEFORE the water. 4 tables of Clif Shots on each side of the street.**



Misc: Please make sure to give your remaining water, cups, Gatorade, 3 tables, & 1 rake to the Late Water Station Captain.

2018 LA Marathon Water Station Layout Mile 20

Water Station Captain:
Arrival Time: 7:00 a.m.

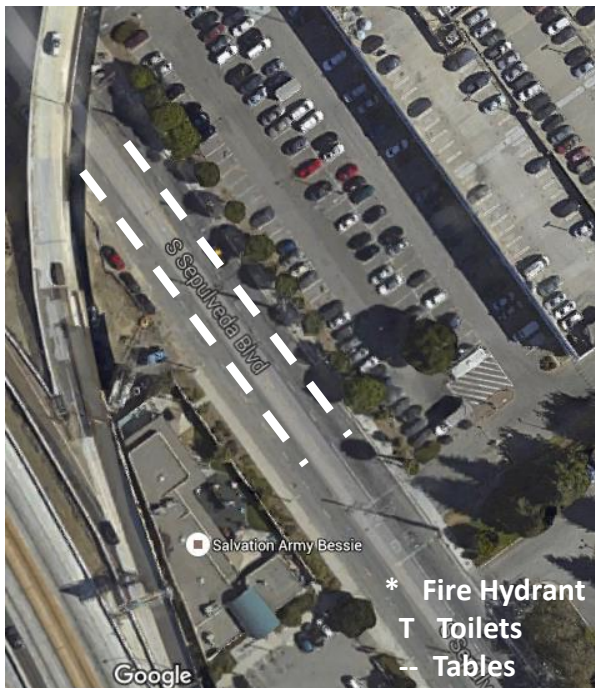
Fill: 12,000 Cups
By: 8:30 a.m.

Qty.	Supply	Qty.	Supply	Qty.	Supply
1	AED(defibrillator)	1	Dolly	10	Toilets
2	Box Cutters	1	Garden Hose & Attachment	31	Tables - Total
1	Box of T-Shirts	1	First Aid Kit	1	Tables - Elite
2	Boxes Hand Wipes	10	Gatorade Containers	10	Tables - Gatorade
4	Boxes of Gloves	10	Gatorade Mixing Paddles	20	Tables - Water
4	Brooms/ Rakes	10	Plastic Pitchers	100	Trash Bags & Ties
23.5	Cases Gatorade Mix (4 gal/case) - 10K servings	2	Shovels	10	Trash Boxes & Case Liners
11	Pallets of 1 Gal Water(1512 Gal = 30k servings water [1200 gal], 10k servings Gatorade [300 gal])	226	Stacking Sheets	4	Vaseline
25	Cases of Arrowhead Water Cups	10	Tables Skirts	2	Large Trash Cans (for hydrant water)
9	Cases Gatorade Cups	42	Toilet Paper	1	Roll Liners for Recyclables

Location: Wilshire, south of Sepulveda in front of building at 1260 S Sepulveda (before fwy offramp)

Medical: Bad News Bears Park, Sepulveda and Ohio

Mile Marker: On SM Blvd, W-bound, 3 yds E of 2nd light pole that's E of Bentley Ave



DD Down Dropped Runner Van located Ohio, east of Sepulveda

2018 LA Marathon Water Station Layout Mile 22

Water Station Captain: Emily Berkin
Arrival Time: 7:00 a.m.

Fill: 12,000 Cups
By: 8:30 a.m.

Qty.	Supply	Qty.	Supply	Qty.	Supply
1	AED(defibrillator)	1	Dolly	10	Toilets
2	Box Cutters	1	Garden Hose & Attachment	30	Tables - Total
1	Box of T-Shirts	1	First Aid Kit	N/A	Tables - Elite
2	Boxes Hand Wipes	10	Gatorade Containers	10	Tables - Gatorade
4	Boxes of Gloves	10	Gatorade Mixing Paddles	20	Tables - Water
4	Brooms/ Rakes	10	Plastic Pitchers	100	Trash Bags & Ties
26	Cases Gatorade Mix (4 gal/case) - 10K servings	2	Shovels	10	Trash Boxes & Case of Liners
12	Pallets of 1 Gal Water(1512 Gal = 30k servings water [1200 gal], 10k servings Gatorade [300 gal])	226	Stacking Sheets	4	Vaseline
25	Cases of Arrowhead Water Cups	10	Tables/ Skirts	2	LargeTrash Cans (for hydrant water)
10	Cases Gatorade Cups	42	Toilet Paper	1	Roll Liners for Recyclables

Location: San Vicente Blvd, just west of S Bundy Dr, in front of school (MEDICAL – SV Blvd & Gretna Green)

Mile Marker: On San Vicente W-bound, just west of Katsuya and 44' west of parking meter BR51.



* Fire Hydrant
T Toilets
-- Tables
M Medical
DD Runner Shuttle

2018 LA Marathon Water Station Layout Mile 23

Water Station Captain: Shigeyuki Hatta
Arrival Time: 7:00 a.m.

Fill: 12,000 Cups
By: 8:30 a.m.

Qty.	Supply	Qty.	Supply	Qty.	Supply
1	AED(defibrillator)	1	Dolly	10	Toilets
2	Box Cutters	1	Garden Hose & Attachment	30	Tables - Total
1	Box of T-Shirts	1	First Aid Kit	N/A	Tables - Elite
2	Boxes Hand Wipes	10	Gatorade Containers	10	Tables - Gatorade
4	Boxes of Gloves	10	Gatorade Mixing Paddles	20	Tables - Water
4	Brooms/ Rakes	10	Plastic Pitchers	100	Trash Bags & Ties
28.75	Cases Gatorade Mix (4 gal/case) - 10K servings	2	Shovels	10	Trash Boxes & Case of Liners
12	Pallets of 1 Gal Water(1512 Gal = 30k servings water [1200 gal], 10k servings Gatorade [300 gal])	226	Stacking Sheets	4	Vaseline
22.5	Cases of Arrowhead Water Cups	10	Tables/ Skirts	2	Large Trash Cans (for hydrant water)
11	Cases Gatorade Cups	42	Toilet Paper	1	Roll Liners for Recyclables

Location: San Vicente Blvd, between 25th St and 24th St.

Mile Marker: On San Vicente E-bound, west of light pole on west side of Bristol Ave.



* Fire Hydrant
T Toilets
-- Tables
DD Runner Shuttle

Misc: Please make sure to give your remaining water, cups, Gatorade, 3 tables, & 1 rake to the Late Water Station Captain.

2018 LA Marathon Water Station Layout

Mile 24

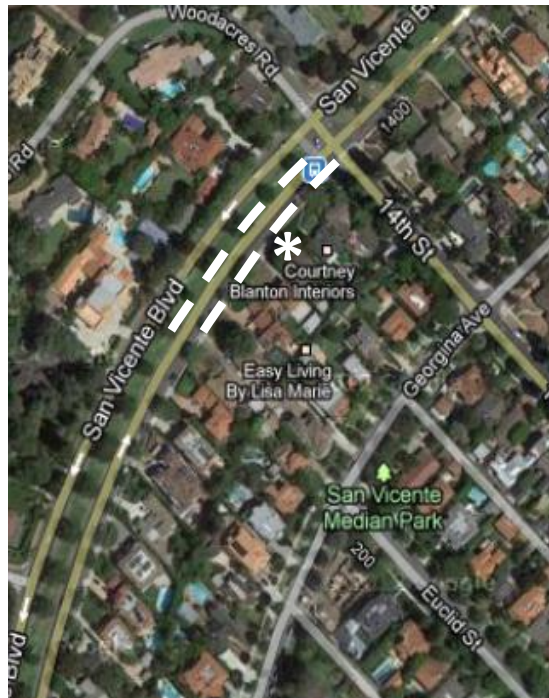
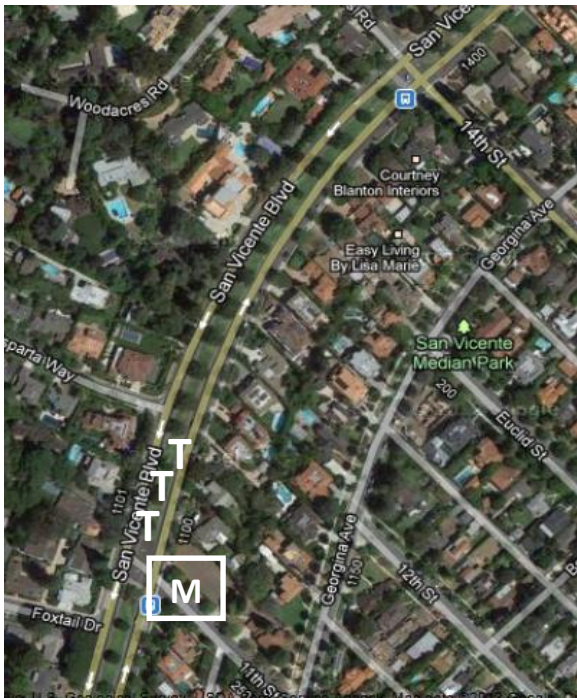
Water Station Captain: Erica Moya
Arrival Time: 7:00 a.m.

Fill: 12,000 Cups
By: 8:30 a.m.

Qty.	Supply	Qty.	Supply	Qty.	Supply
1	AED(defibrillator)	1	Dolly	10	Toilets
2	Box Cutters	1	Garden Hose & Attachment	31	Tables - Total
1	Box of T-Shirts	1	First Aid Kit	1	Tables - Elite
2	Boxes Hand Wipes	10	Gatorade Containers	10	Tables - Gatorade
4	Boxes of Gloves	10	Gatorade Mixing Paddles	20	Tables - Water
4	Brooms/ Rakes	10	Plastic Pitchers	100	Trash Bags & Ties
23.5	Cases Gatorade Mix (4 gal/case) - 10K servings	2	Shovels	10	Trash Boxes & Case of Liners
11	Pallets of 1 Gal Water(1512 Gal = 30k servings water [1200 gal], 10k servings Gatorade [300 gal])	226	Stacking Sheets	4	Vaseline
22.5	Cases of Arrowhead Water Cups	10	Tables/ Skirts	2	LargeTrash Cans (for hydrant water)
9	Cases Gatorade Cups	42	Toilet Paper	1	Roll Liners for Recyclables

Location: San Vicente Blvd, just west of 14th St. (MEDICAL – SV Blvd and 11th St)

Mile Marker: On San Vicente E-bound, West of pole 2255357E on the west side of 18th St.



* Fire Hydrant

T Toilets

-- Tables

M Medical

2018 LA Marathon Water Station Layout Mile 25

Water Station Captain: Cristina Cortes
Arrival Time: 7:00 a.m.
Late WS: Robin Myers 818 326 0423

Fill: 12,000 Cups
By: 8:30 a.m.

Qty.	Supply	Qty.	Supply	Qty.	Supply
1	AED(defibrillator)	1	Dolly	10	Toilets
2	Box Cutters	1	Garden Hose & Attachment	30	Tables - Total
1	Box of T-Shirts	1	First Aid Kit	N/A	Tables - Elite
2	Boxes Hand Wipes	10	Gatorade Containers	10	Tables - Gatorade
4	Boxes of Gloves	10	Gatorade Mixing Paddles	20	Tables - Water
4	Brooms/ Rakes	10	Plastic Pitchers	100	Trash Bags & Ties
23.5	Cases Gatorade Mix (4 gal/case) - 10K servings	2	Shovels	10	Trash Boxes & Case of Liners
8	Pallets of 1 Gal Water(1512 Gal = 30k servings water [1200 gal], 10k servings Gatorade [300 gal])	226	Stacking Sheets	4	Vaseline
15	Cases of Arrowhead Water Cups	10	Tables/ Skirts	2	LargeTrash Cans (for hydrant water)
9	Cases Gatorade Cups	42	Toilet Paper	1	Roll Clear Liners for Recyclables

Location: Ocean Ave, just past Marguerita Ave.

Mile Marker: On San Vicente E-bound, 6 yds west of the gate at 502 San Vicente.



* Fire Hydrant
T Toilets
-- Tables

Misc: Please make sure to give your remaining water, cups, Gatorade, 3 tables, & 1 rake to the Late Water Station Captain.